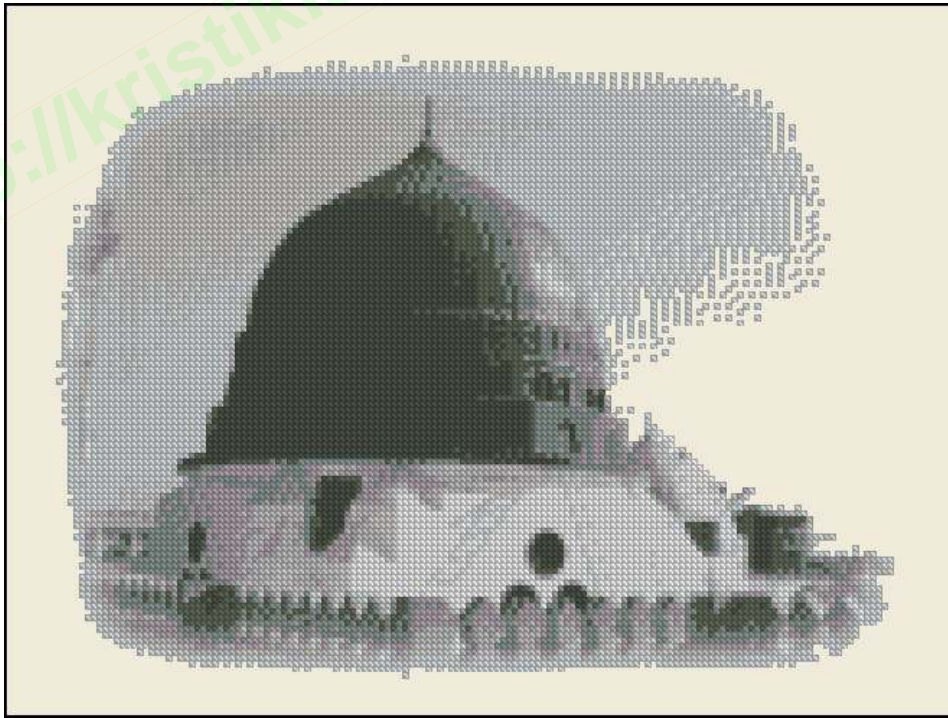


Masjid Nabawi (monochrome)



Item Code:	SCE 035
Pattern Name:	Masjid Nabawi (monochrome)
Design:	© Ren WS, © Java Cross Stitch, 2011
Fabric:	Aida 14, E cru
Size:	165w X 124h Stitches (design area)
Completed:	11 Count, 38w X 28.65h cm
	14 Count, 30w X 22.5h cm
	16 Count, 26.2w X 19.7 cm
	18 Count, 23.3w X 17.5h cm

Copyrights Information

Most of Rights reserved, 2012

Licensed under a Attribution-Noncommercial-No Derivative Works 3.0 Unported License (see <http://creativecommons.org/licenses/by-nc-nd/3.0/>)

You are free to Share — to copy, distribute and transmit the work **UNDER THE FOLLOWING CONDITIONS:**

1. **Attribution.** You must attribute the work in the manner specified by the author or licensor (but not in any way that suggests that they endorse you or your use of the work)
2. **Noncommercial.** You may not use this work for commercial purposes.
3. **No Derivative Works.** You may not alter, transform, or build upon this work.

=====
for more free patterns, please visit

<http://kristikislami.blogspot.com>

<http://islamic-cs.blogspot.com>

If you like our patterns, you can buy us some tea.
Send your donation via PayPal by clicking the cup bellow ☺



=====
thank you

KRISTIK
Islamic

Jl. Belitung No. 33, Hadimulyo Barat
Metro, Lampung 34113 – Indonesia













✉ islamicxstitch@yahoo.com

☎ (62) 725 41322 - (62) 815 40835 146

Key and Floss Information

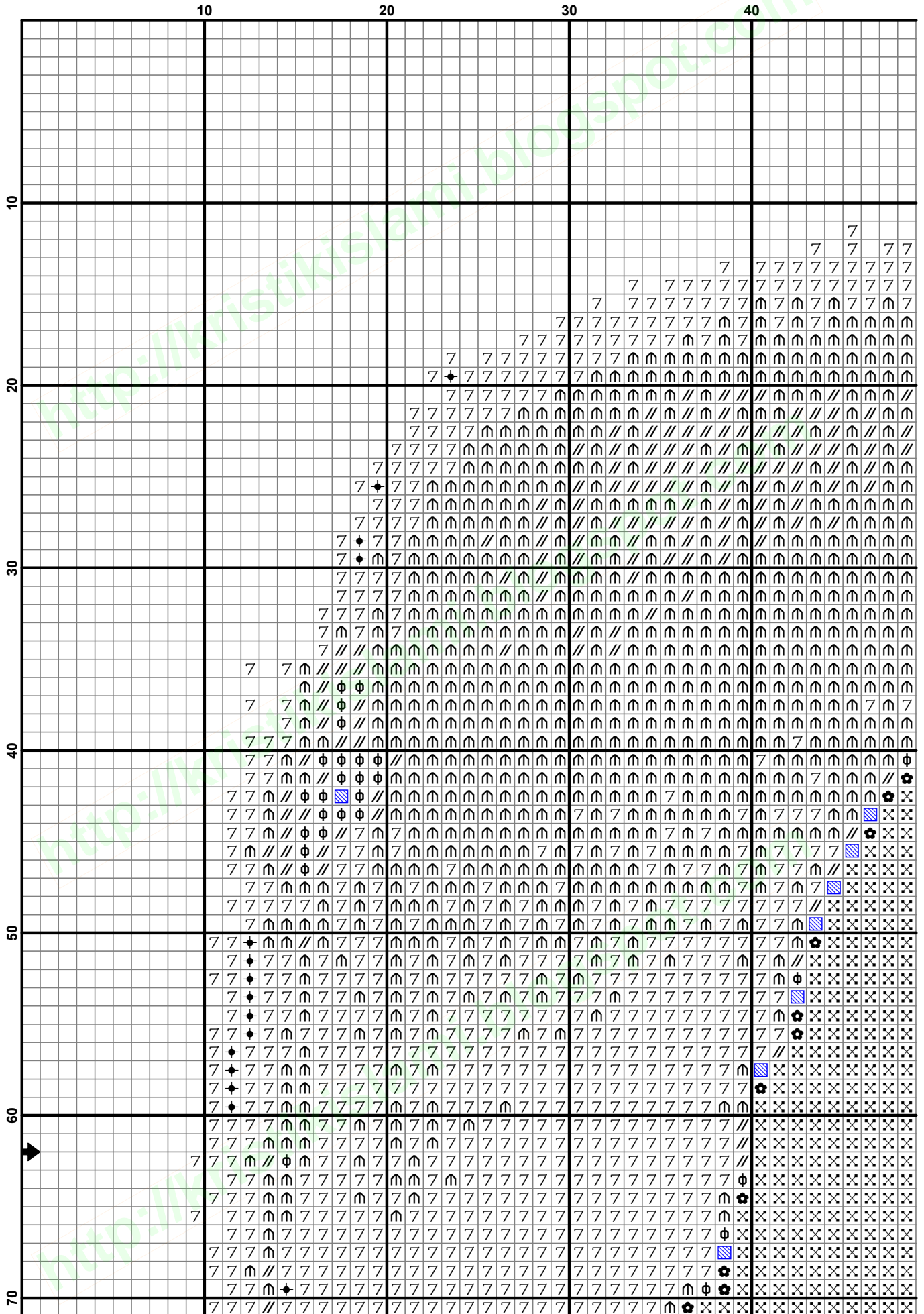
Notes: Always start stitching your cross stitch project from the centre.

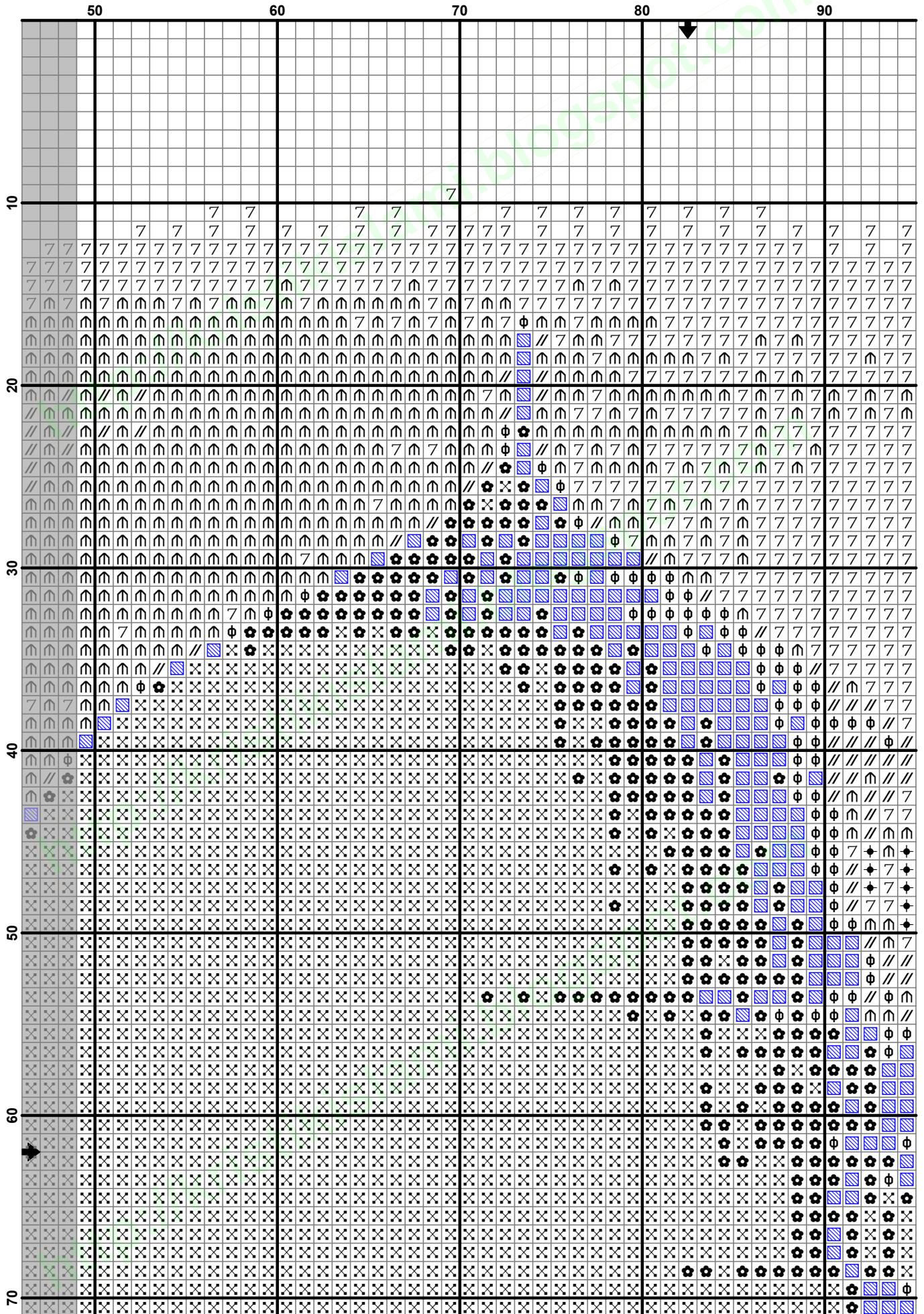
Legend:

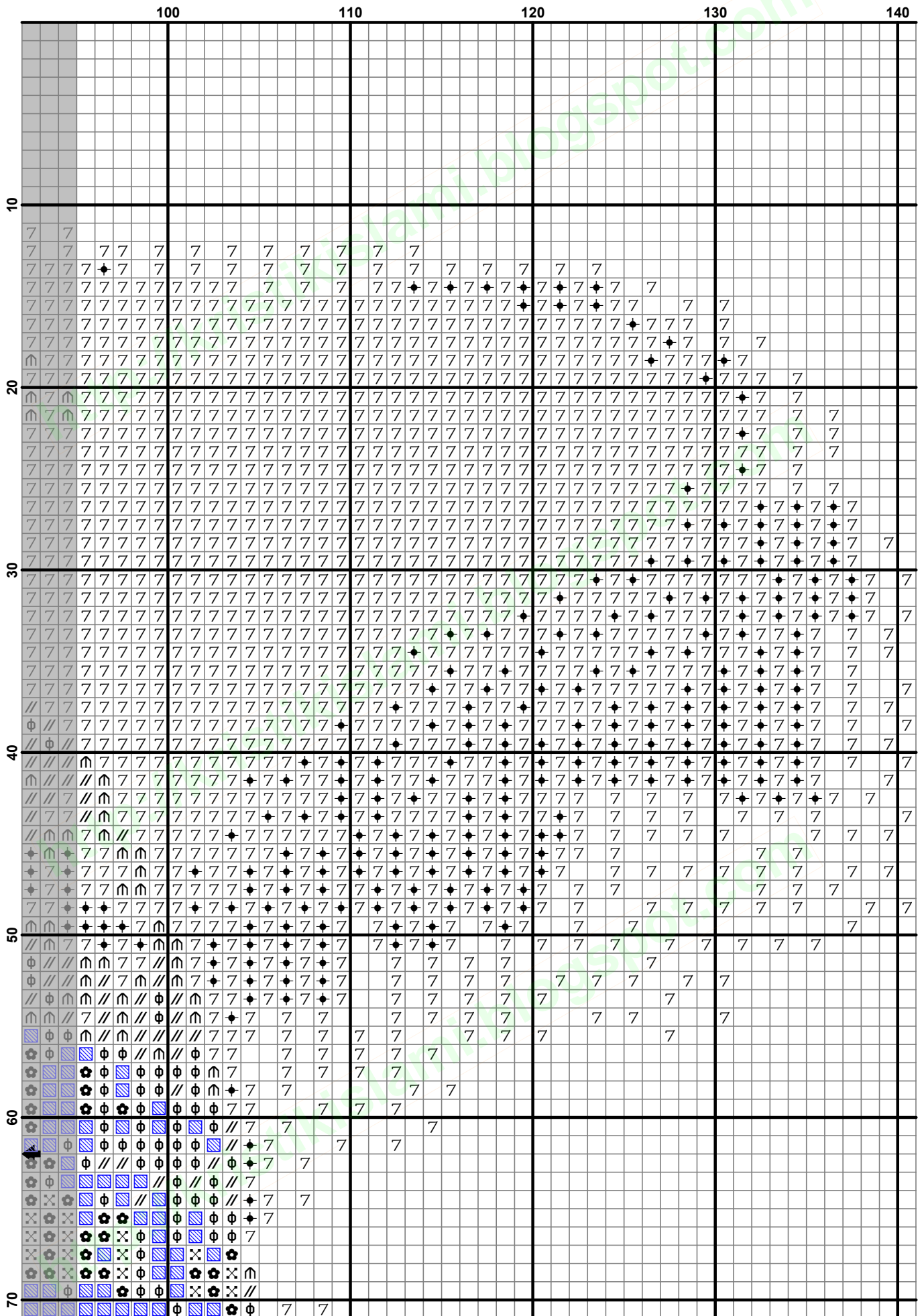
	Symbol	Strands	Brand	Number	Color	Full	Skein Est.
	↯	2	DMC	24	Brown Grey - VY LT	1715	0.731
	//	2	DMC	000	Zilver	863	0.368
		2	DMC	169	Pewter-LT	1026	0.437
		2	DMC	535	Ash Gray-VY LT	727	0.310
	7	2	DMC	762	Pearl Gray-VY LT	3409	1.452
	φ	2	DMC	3042	Antique Violet-LT	933	0.397
		2	DMC	3799	Pewter Gray-VY DK	2026	0.863
		2	DMC	5272	Metallic White Pearl	1169	0.498

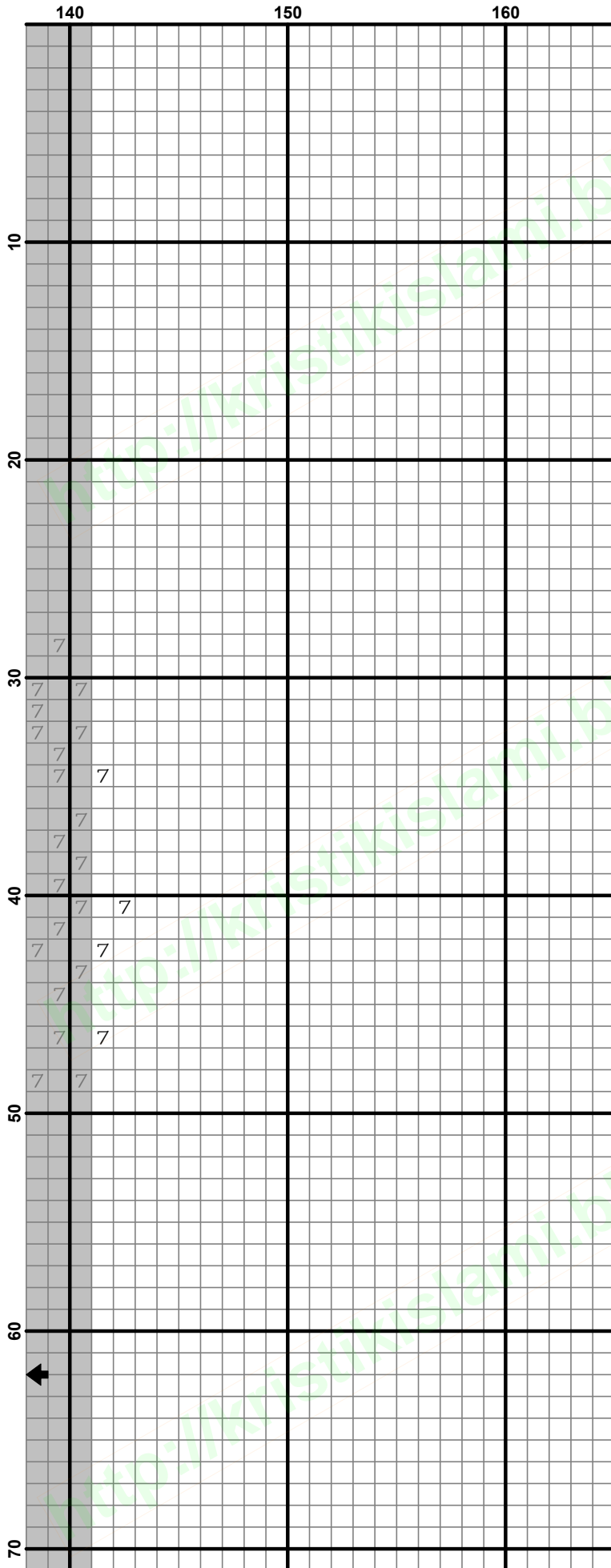
Strands Per Skein: 6

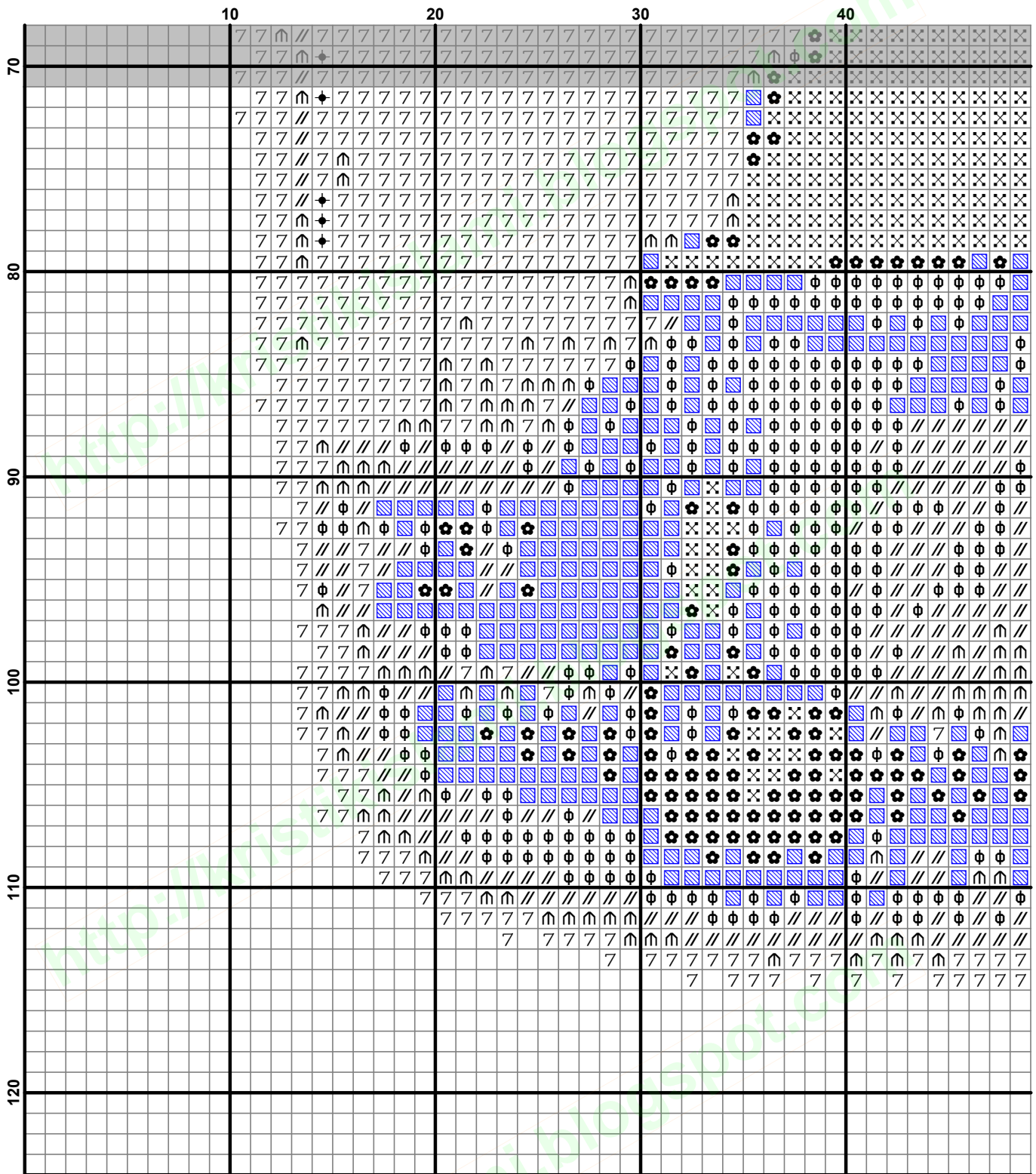
Skein Length: 313.0 in. approx. 8,000 mm

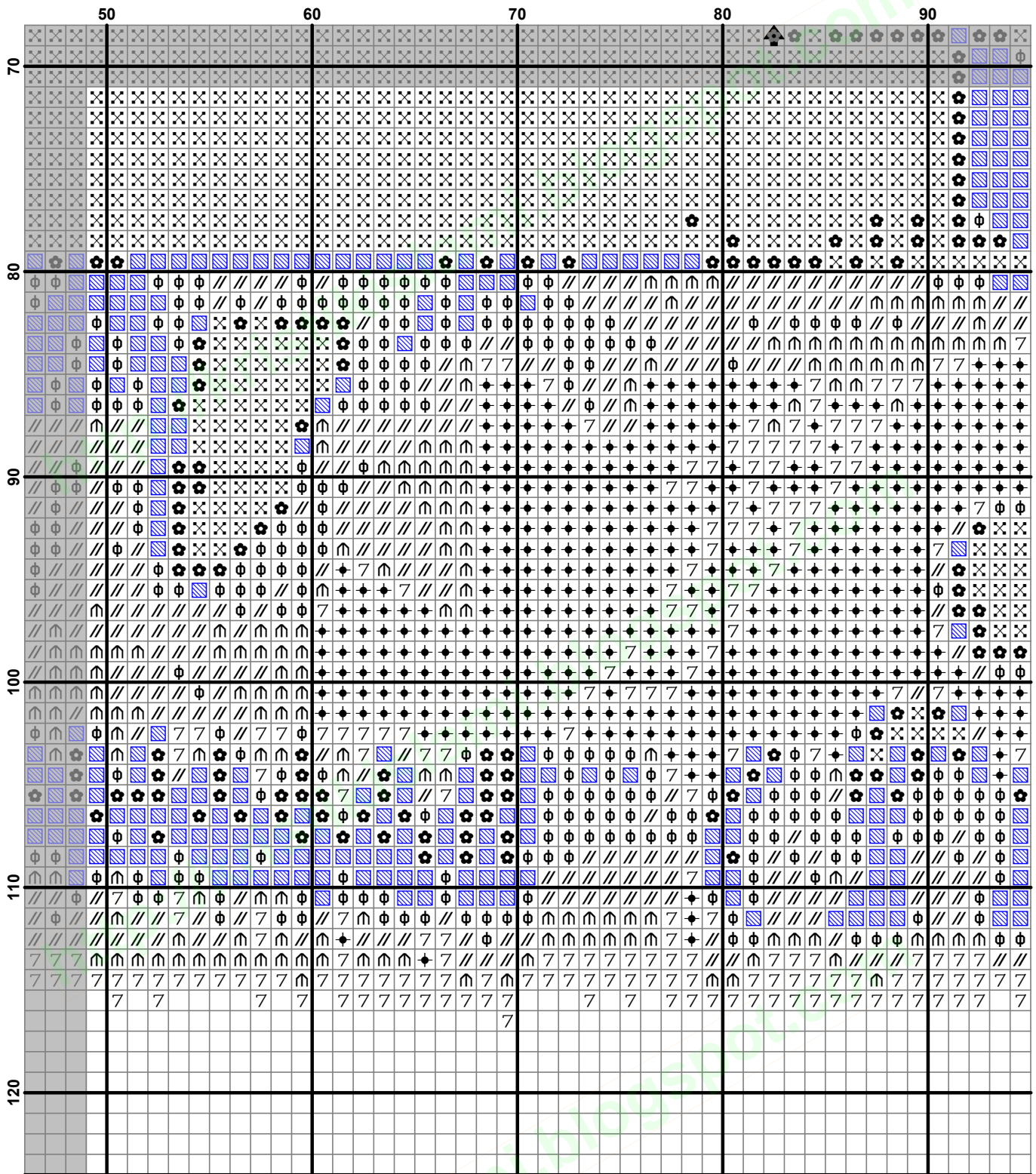


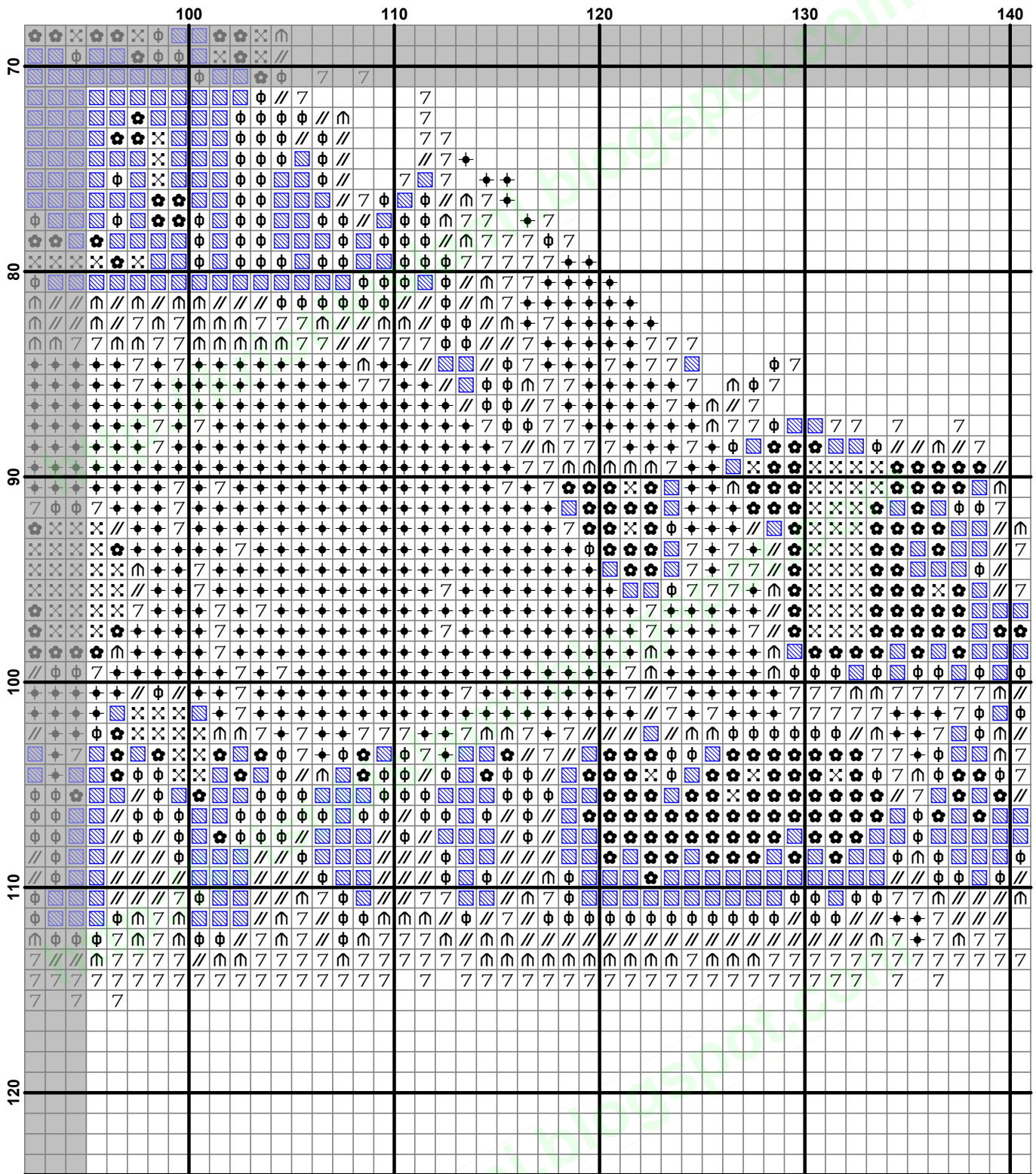


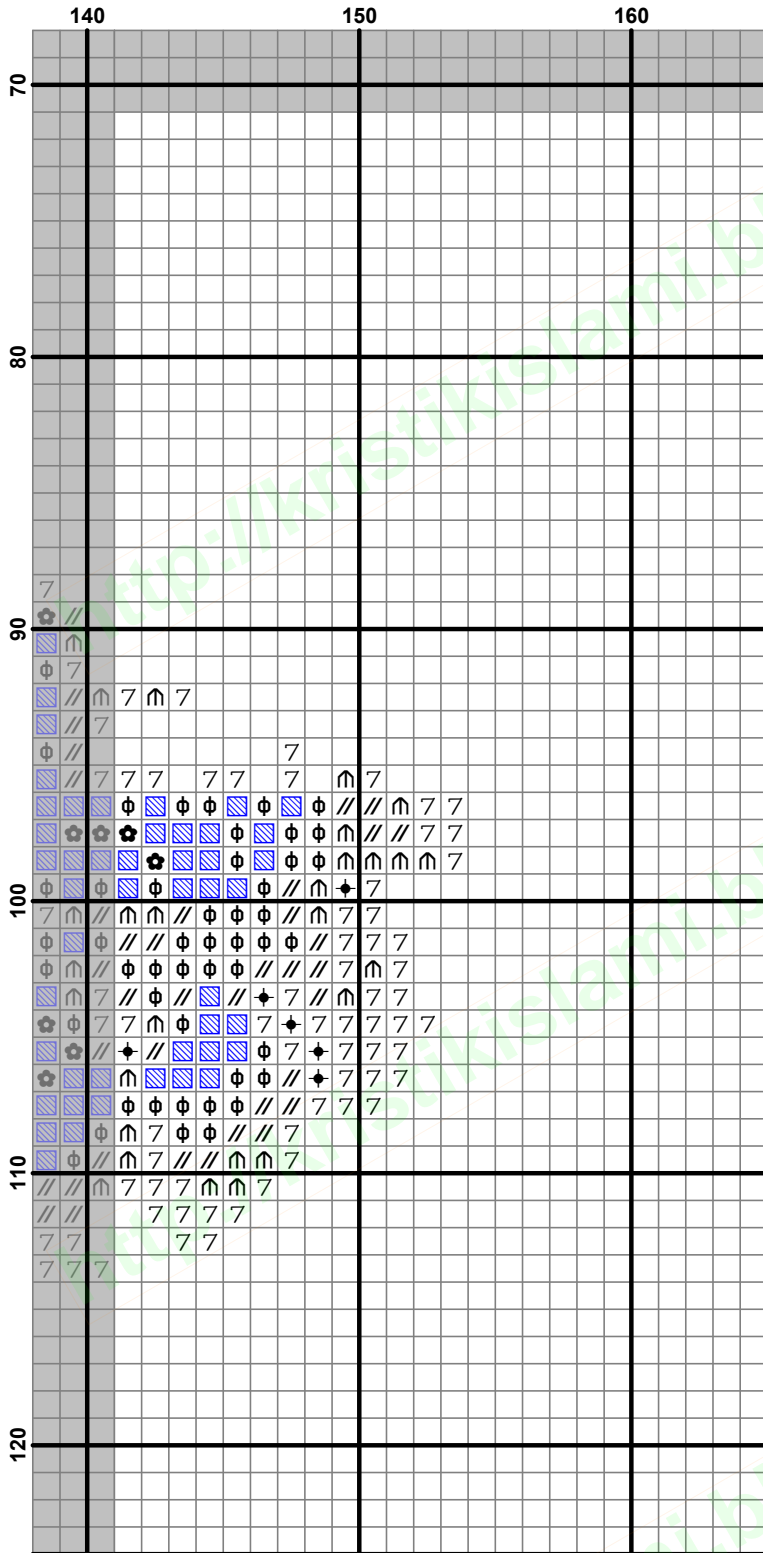












Find Us on the Internet



KRISTIK
Islamic

Jl. Belitung No. 33, Hadimulyo Barat
Metro, Lampung 34113 – Indonesia

✉ islamicxstitch@yahoo.com

☎ (62) 725 41322 - (62) 815 40835 146