

Mawar Merah

(the Red Rose)



Item Code:	MAH 033
Pattern Name:	Mawar Merah
Design by:	Ren WS, Artwork © Java Cross Stitch, 2011
Fabric:	Aida 14ct, Black
Size:	189w X 177h Stitches
Completed:	14 Count, 13-1/2w X 12-5/8h in 11 Count, 17-1/8w X 16h in 18 Count, 10-1/2w X 9-3/4h in 22 Count, 8-1/2w X 8h in

Copyrights Information

Most of Rights reserved, 2011

Licensed under a Attribution-Noncommercial-No Derivative Works 3.0 Unported License (see <http://creativecommons.org/licenses/by-nc-nd/3.0/>)

You are free to Share — to copy, distribute and transmit the work **UNDER THE FOLLOWING CONDITIONS:**

1. **Attribution.** You must attribute the work in the manner specified by the author or licensor (but not in any way that suggests that they endorse you or your use of the work)
2. **Noncommercial.** You may not use this work for commercial purposes.
3. **No Derivative Works.** You may not alter, transform, or build upon this work.

=====
for more free patterns, please visit

<http://kristikislami.blogspot.com>

<http://islamic-cs.blogspot.com>

If you like our patterns, you can buy us some tea.
Send your donation via PayPal by clicking the cup bellow ☺



=====
thank you

KRISTIK
Islamic

Jl. Belitung No. 33, Hadimulyo Barat
Metro, Lampung 34113 – Indonesia

✉ islamicxstitch@yahoo.com

☎ (62) 725 41322 - (62) 815 40835 146

Key and Floss Information

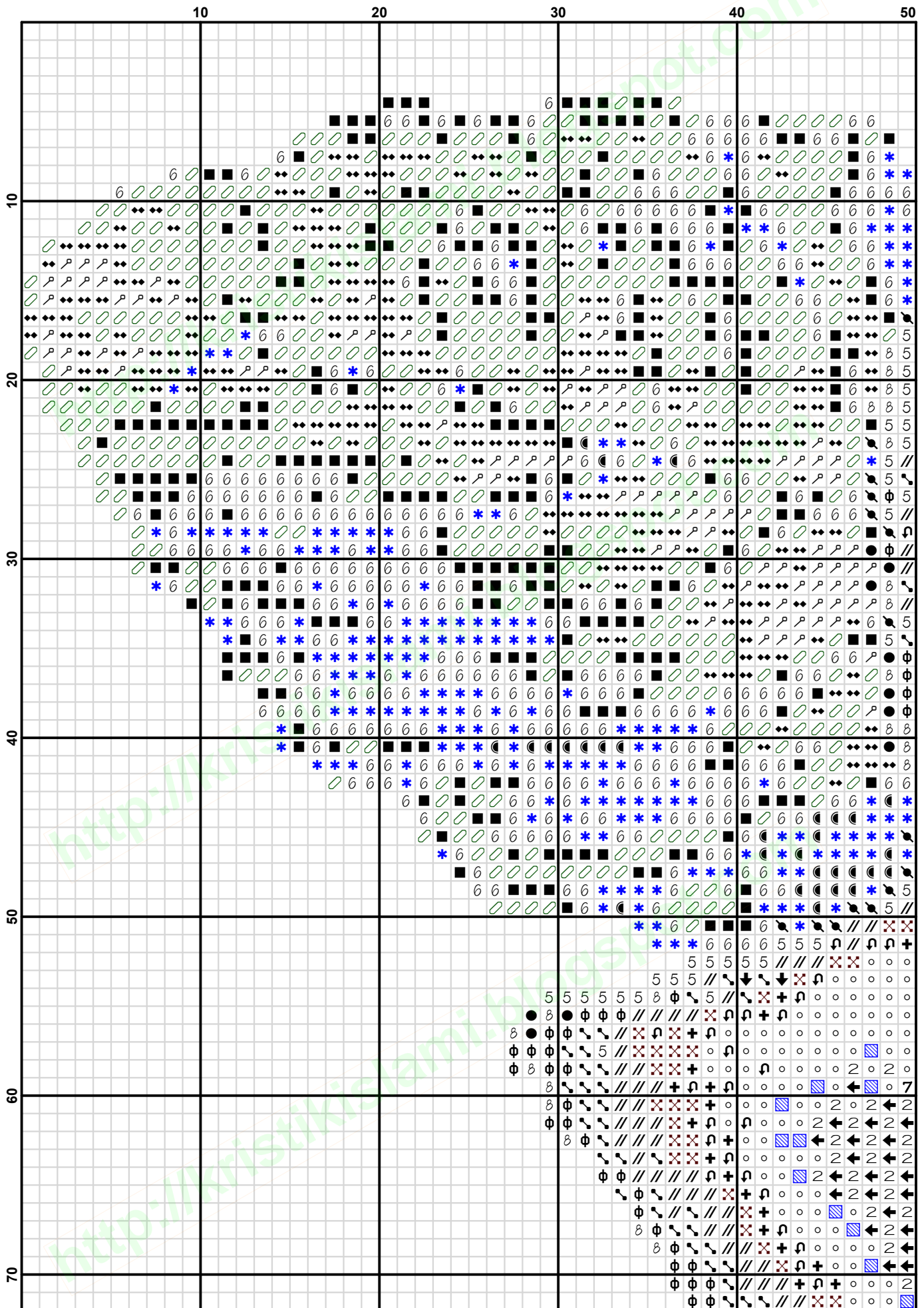
Notes: This pattern was designed with usage of DMC cotton threads (Art 117) in mind, using 2 strands on 14ct Aida fabric. We suggest you to use 3 strands for 11ct, or 1 strands for 18ct and above (1 over 1) .. thank you for downloading our pattern, happy stitching! ☺

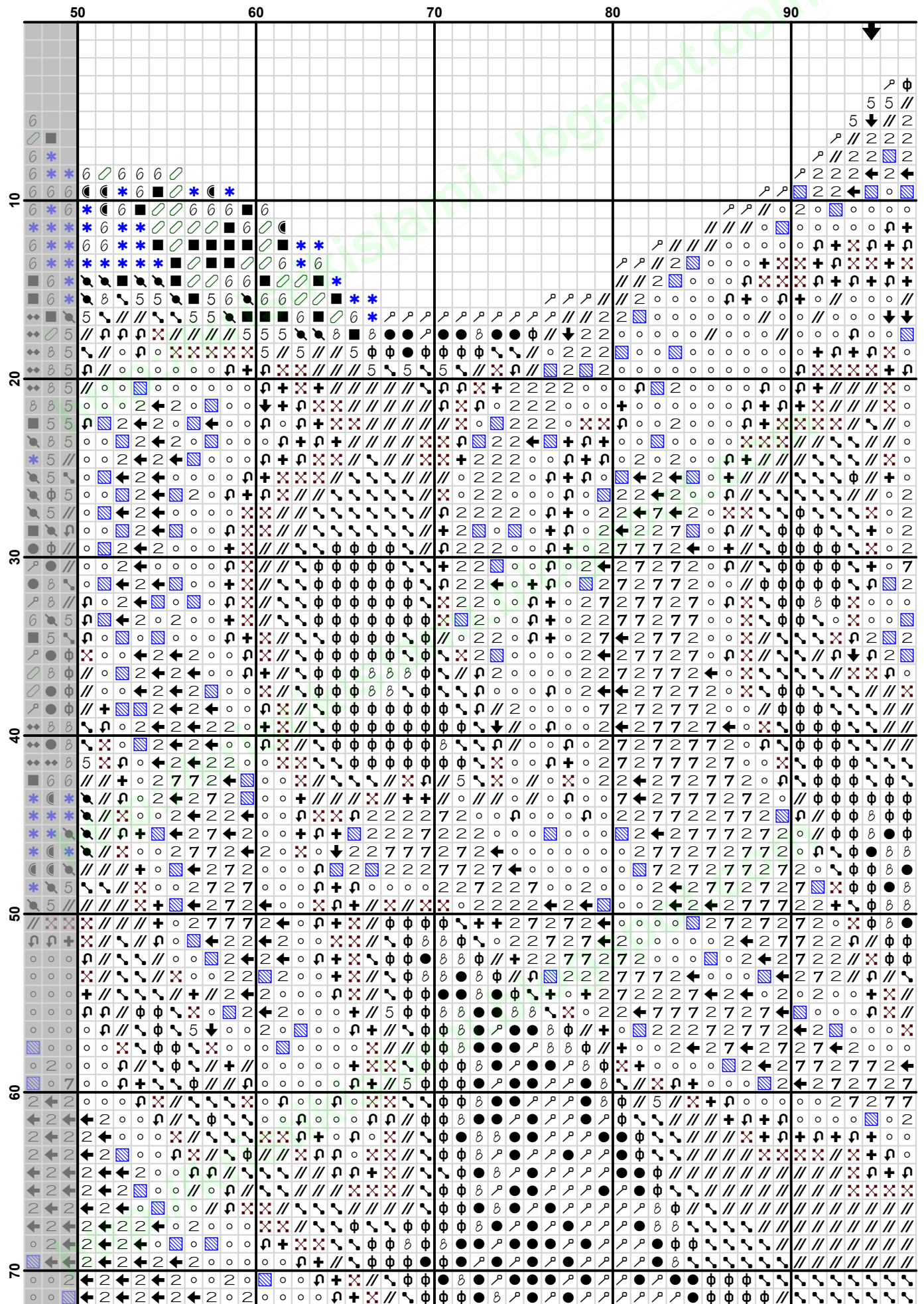
Floss Used for Full Stitches

Symbol	Anchor	DMC	Full	Skein Est.
■	8	897 Rose Wine VY DK	221 Shell Pink-VY DK	604 1.000
■	✕	1006 Cherry Red	304 Christmas Red-MD	810 1.000
■	↓	42 Carmine Rose Med	309 Rose-DK	98 1.000
■	⦿	1019 Antique Mauve VY DK	315 Antique Mauve-VY DK	42 1.000
■	6	400 Grey Med	317 Pewter Gray	1316 1.000
■	+	9046 Christmas Red	321 Christmas Red	426 1.000
■	↺	59 China Rose	326 Rose-VY DK	725 1.000
■	◆	862 Laurel Green DK	520 Fern Green-DK	1455 1.000
■	●	102 Violet VY DK	550 Violet-VY DK	711 1.000
■	←	334 Blaze Med	606 Bright Orange-Red	231 1.000
■	*	273 Stone Grey DK	645 Beaver Gray-VY DK	883 1.000
■	☾	8581 Stone Grey	646 Beaver Gray-DK	166 1.000
■	φ	45 Carmine Rose VY DK	814 Garnet-DK	1402 1.000
■	↻	43 Carmine Rose Med DK	815 Garnet-MD	1256 1.000
■	//	1005 Cherry Red Med	816 Garnet	1625 1.000
■	o	13 Salmon DK	817 Coral Red-VY DK	2050 1.000
■	■	1041 Stone Grey VY DK	844 Beaver Brown-UL DK	1130 1.000
■	▨	333 Blaze Med LT	900 Burnt Orange-DK	294 1.000
■	7	332 Blaze LT	946 Burnt Orange-MD	211 1.000
■	♯	382 Fudge DK	3371 Black Brown	997 1.000
■	5	1028 Raspberry Med DK	3685 Mauve-DK	196 1.000
■	2	35 Blush DK	3705 Melon-DK	808 1.000
■	o	236 Charcoal Grey DK	3799 Pewter Gray-VY DK	2061 1.000

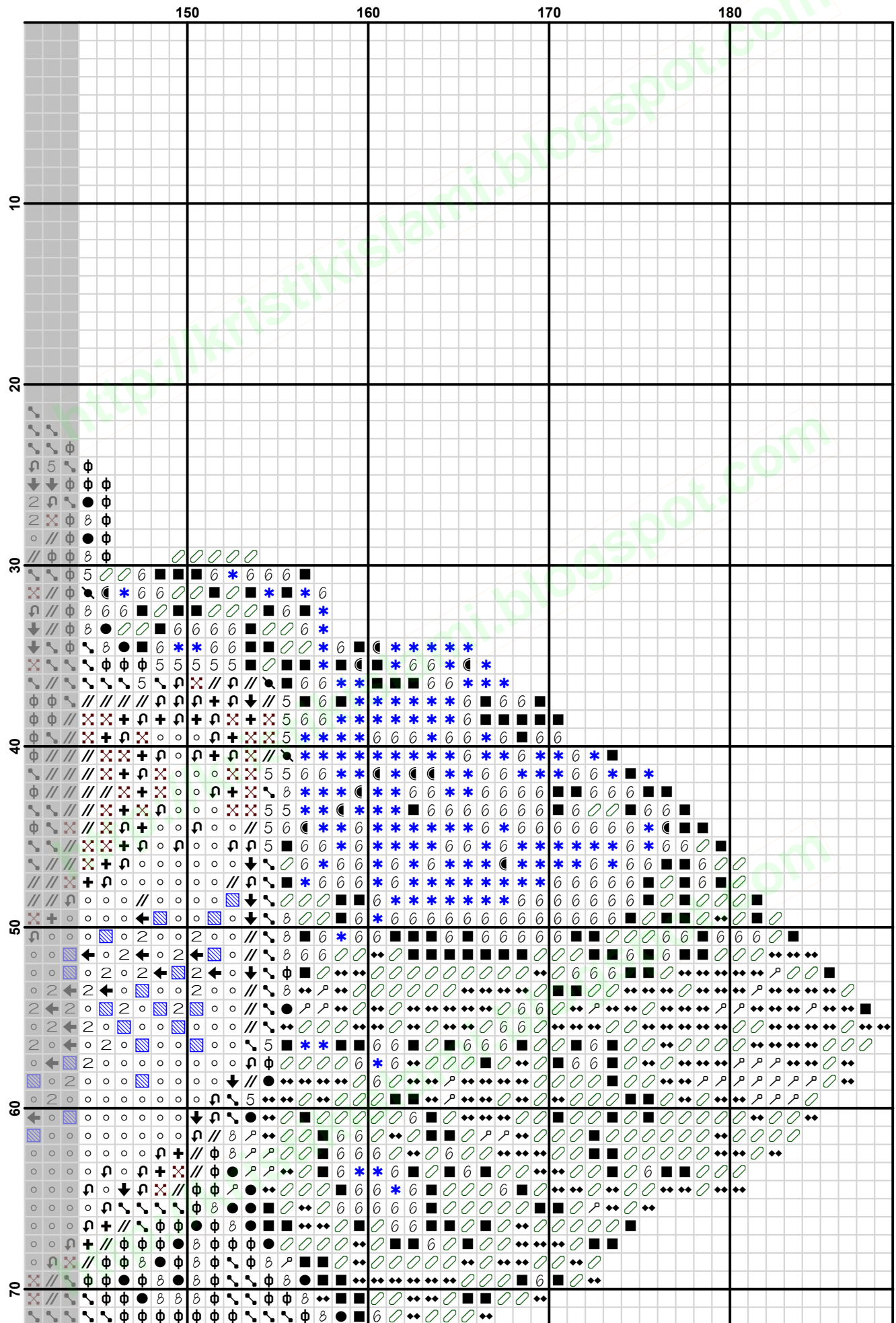
Strands Per Skein: 6

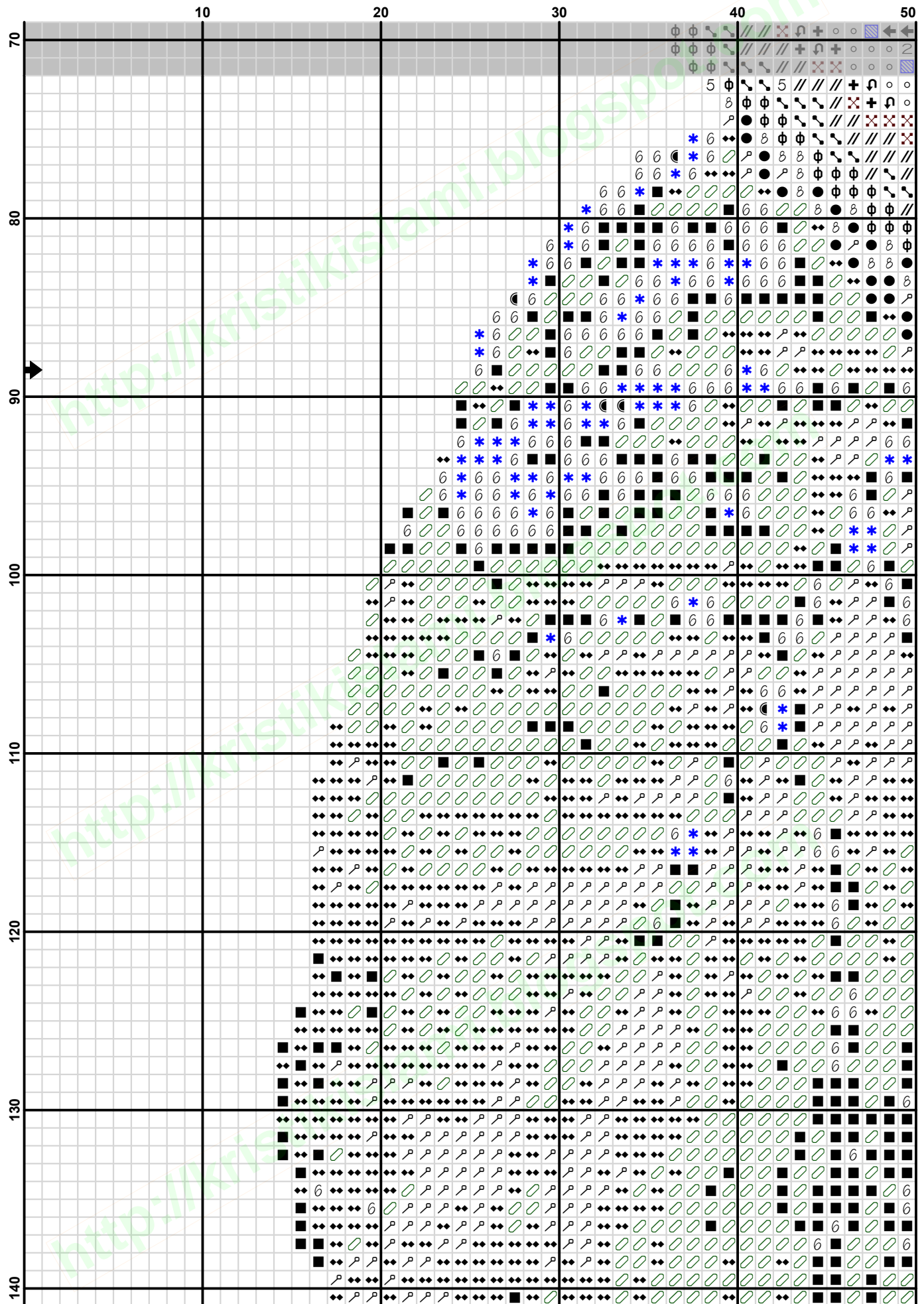
Skein Length: 313.0 in. approx. 8,000 mm

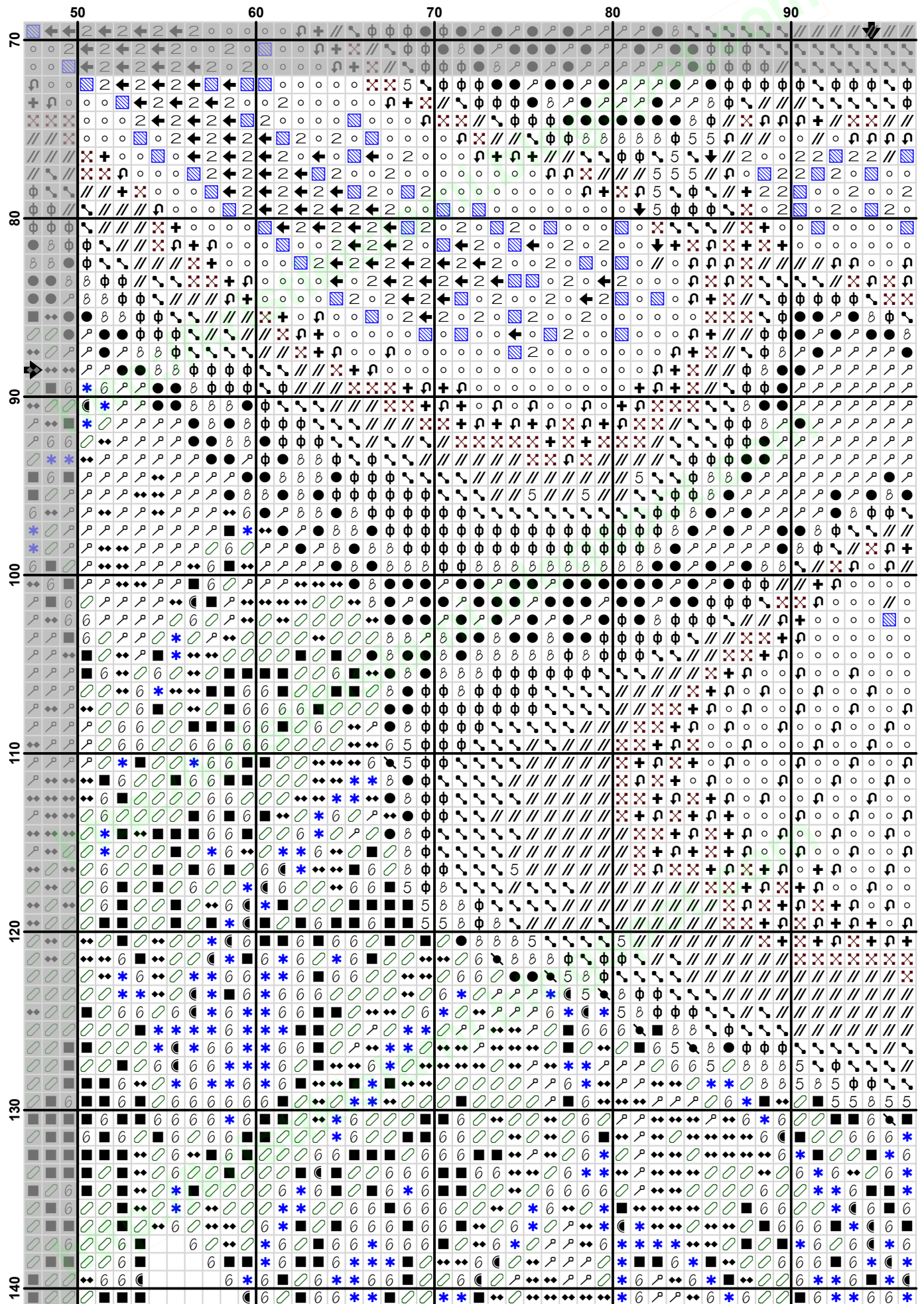


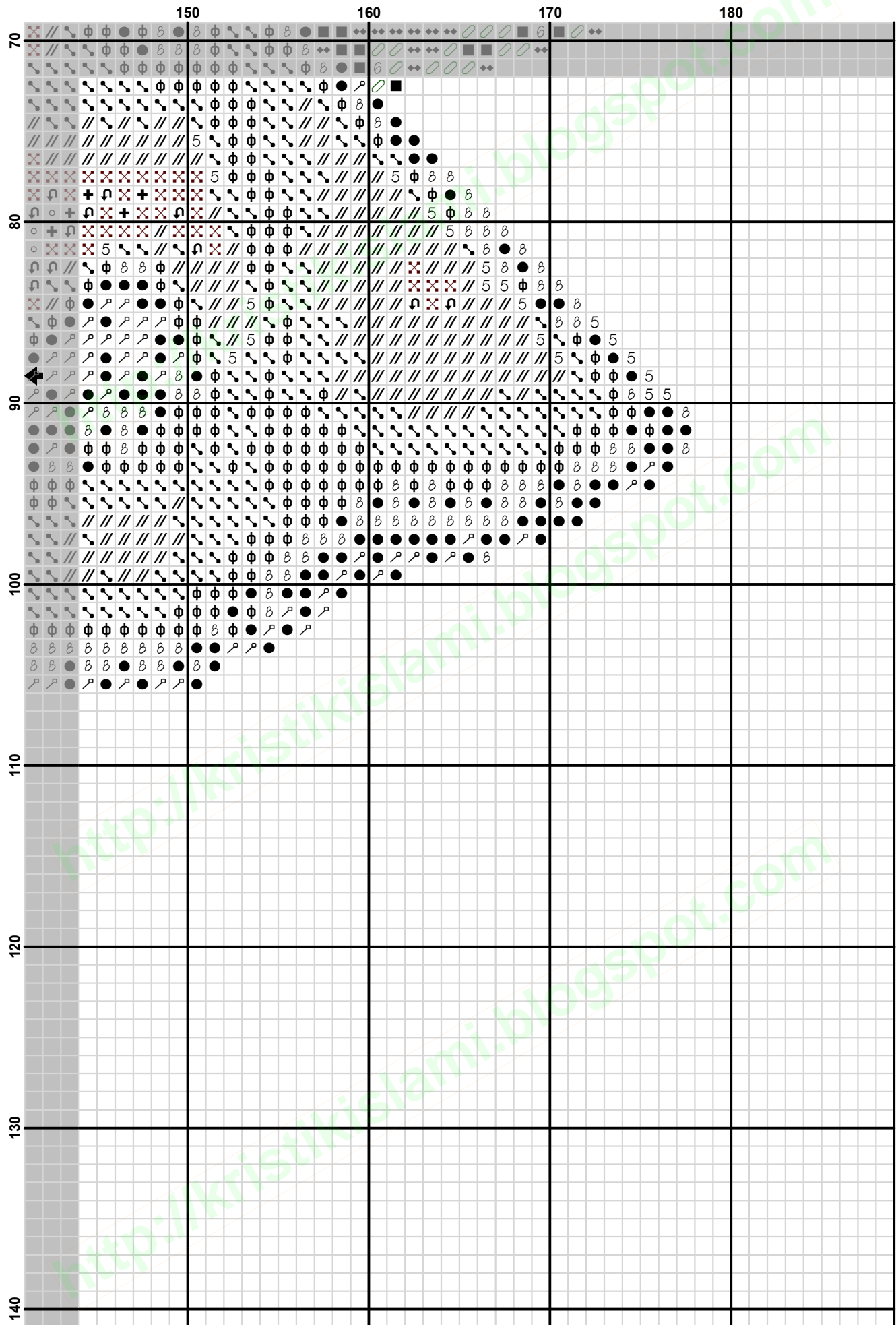


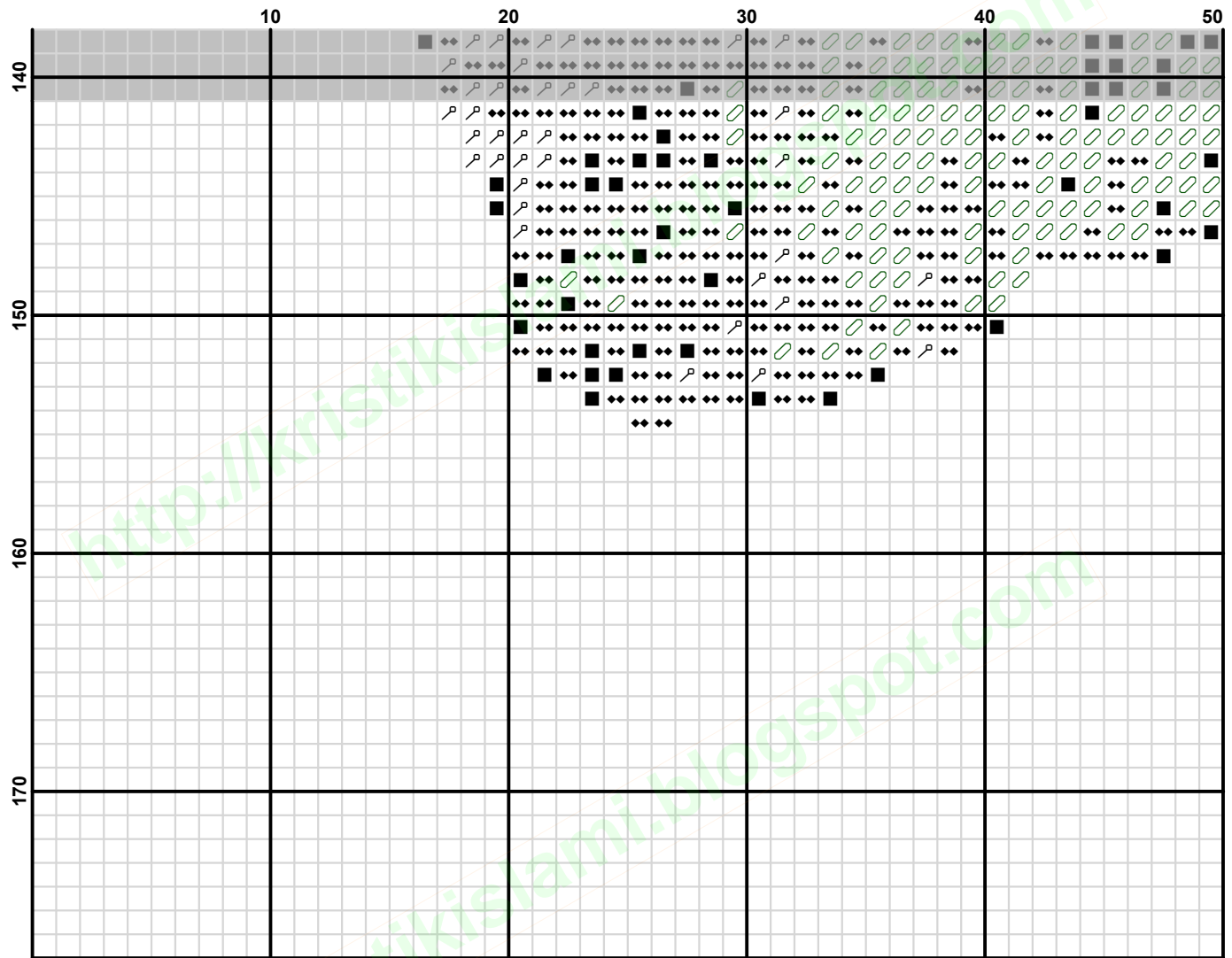
The image displays a complex grid-based pattern for 'Mawar Merah'. The grid is organized into columns labeled 100, 110, 120, 130, and 140, and rows labeled 10, 20, 30, 40, 50, 60, and 70. Each cell in the grid contains a specific symbol or combination of symbols, including circles, squares, lines, and arrows. Some symbols are colored in blue, red, or green. The pattern is highly detailed and repetitive, characteristic of a traditional Islamic geometric design. A watermark 'www.kristik.com' is visible diagonally across the grid.

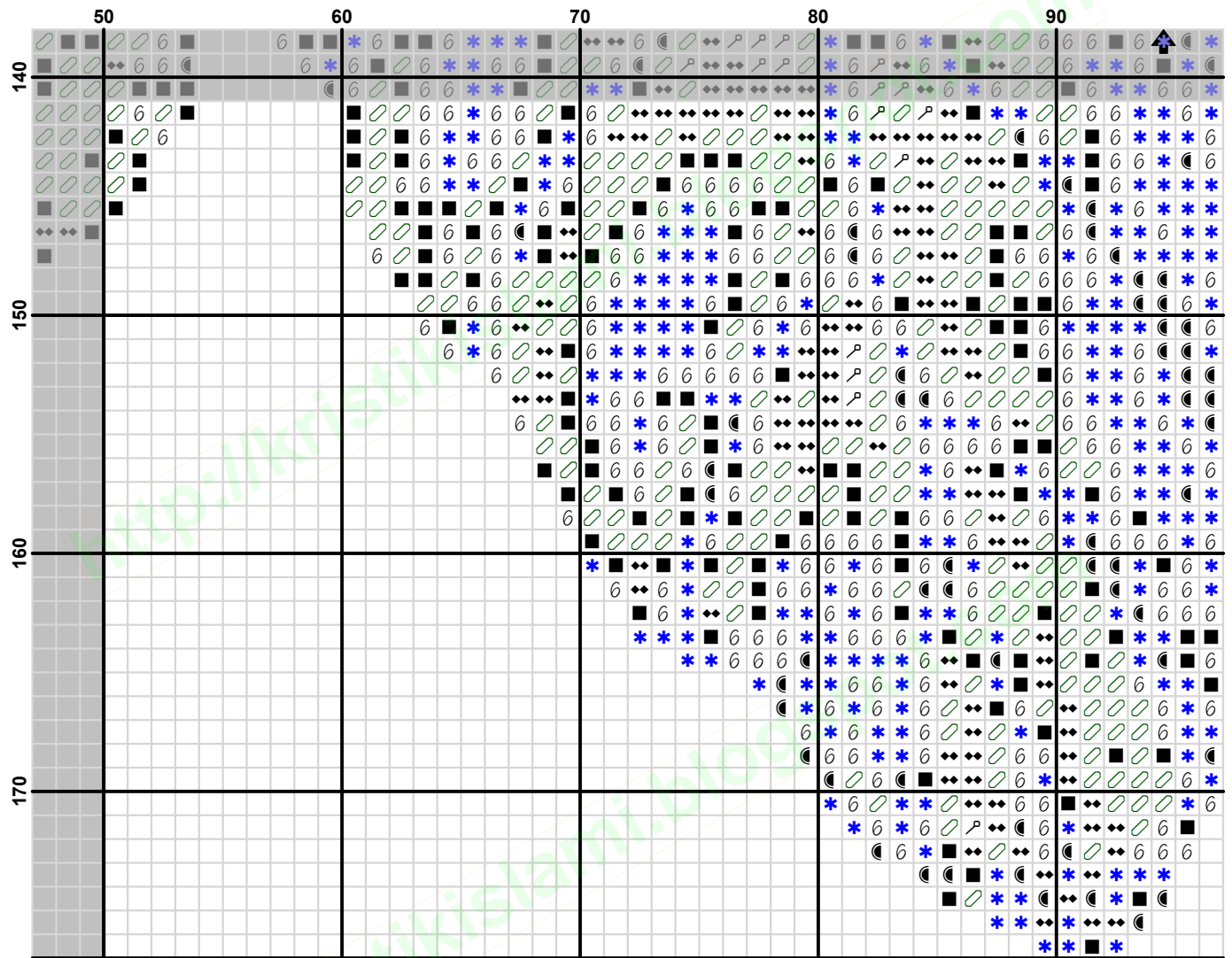


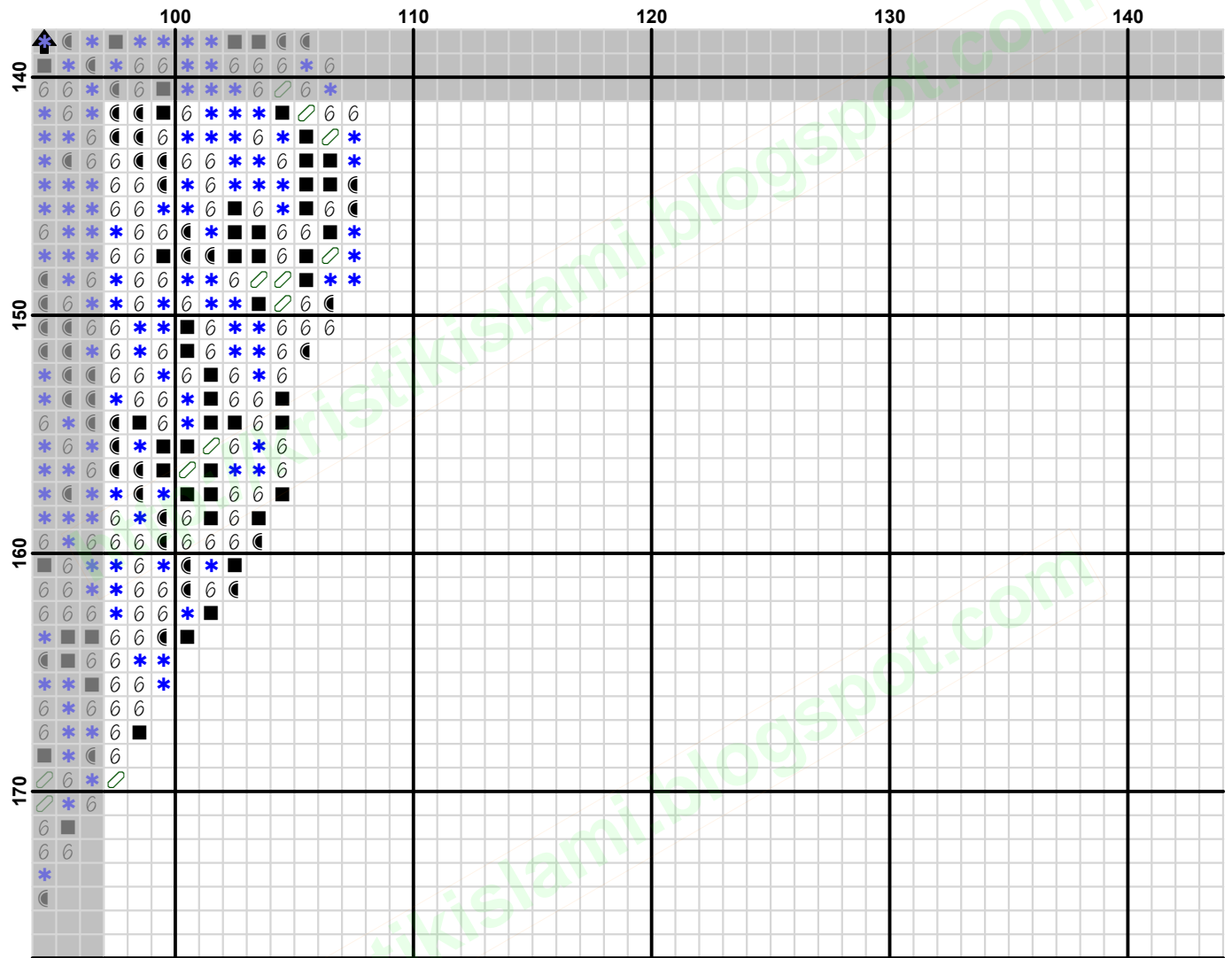


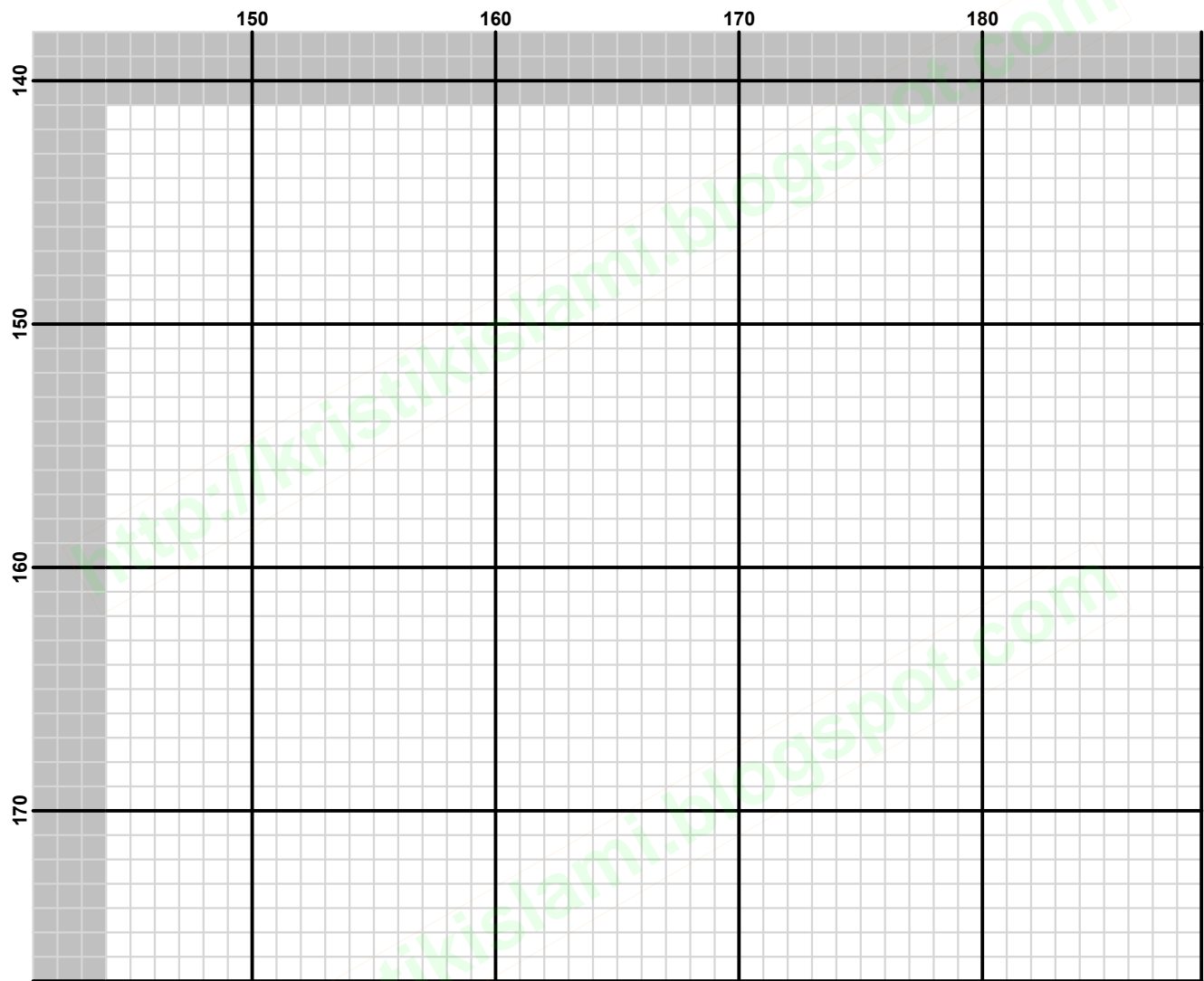












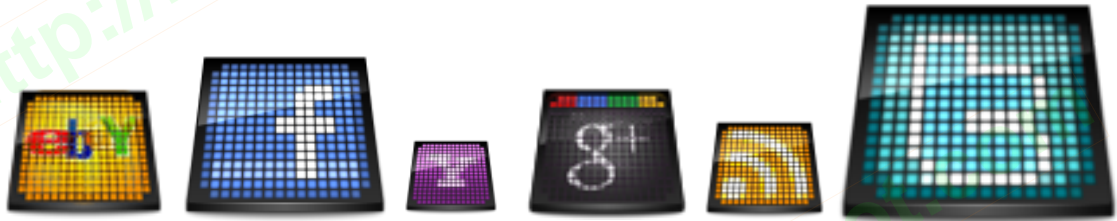
<http://kristikislami.blogspot.com>

Pattern Name: Mawar Merah
Designed By: Ren WS
Company: Kristik Islami
Copyright: Most of Rights Reserved, CC-by NC-ND 3.0
Fabric: Aida 14, Black
 189w X 177h Stitches
Size(s): 14 Count, 13-1/2w X 12-5/8h in
 11 Count, 17-1/8w X 16h in
 18 Count, 10-1/2w X 9-3/4h in
 22 Count, 8-1/2w X 8h in

Floss Used for Full Stitches:

Symbol	Strands	Type	Number	Color
	2	DMC	221	Shell Pink-VY DK
	2	DMC	304	Christmas Red-MD
	2	DMC	309	Rose-DK
	2	DMC	315	Antique Mauve-VY DK
	2	DMC	317	Pewter Gray
	2	DMC	321	Christmas Red
	2	DMC	326	Rose-VY DK
	2	DMC	520	Fern Green-DK
	2	DMC	550	Violet-VY DK
	2	DMC	606	Bright Orange-Red
	2	DMC	645	Beaver Gray-VY DK
	2	DMC	646	Beaver Gray-DK
	2	DMC	814	Garnet-DK
	2	DMC	815	Garnet-MD
	2	DMC	816	Garnet
	2	DMC	817	Coral Red-VY DK
	2	DMC	844	Beaver Brown-UL DK
	2	DMC	900	Burnt Orange-DK
	2	DMC	946	Burnt Orange-MD
	2	DMC	3371	Black Brown
	2	DMC	3685	Mauve-DK
	2	DMC	3705	Melon-DK
	2	DMC	3799	Pewter Gray-VY DK

Find Us on the Internet



KRISTIK
Islamic

Jl. Belitung No. 33, Hadimulyo Barat
Metro, Lampung 34113 – Indonesia

✉ islamicxstitch@yahoo.com

☎ (62) 725 41322 - (62) 815 40835 146