

# Mawar Merah

*(the Red Rose)*



---

<b>Item Code:</b>	MAH 033
<b>Pattern Name:</b>	Mawar Merah
<b>Design by:</b>	Ren WS, Artwork © Java Cross Stitch, 2011
<b>Fabric:</b>	Aida 14ct, Black
<b>Size:</b>	189w X 177h Stitches
<b>Completed:</b>	14 Count, 13-1/2w X 12-5/8h in 11 Count, 17-1/8w X 16h in 18 Count, 10-1/2w X 9-3/4h in 22 Count, 8-1/2w X 8h in

---

# Copyrights Information

Most of Rights reserved, 2011

Licensed under a Attribution-Noncommercial-No Derivative Works 3.0 Unported License (see <http://creativecommons.org/licenses/by-nc-nd/3.0/>)

You are free to Share — to copy, distribute and transmit the work **UNDER THE FOLLOWING CONDITIONS:**

1. **Attribution.** You must attribute the work in the manner specified by the author or licensor (but not in any way that suggests that they endorse you or your use of the work)
2. **Noncommercial.** You may not use this work for commercial purposes.
3. **No Derivative Works.** You may not alter, transform, or build upon this work.

=====  
*for more free patterns, please visit*

<http://kristikislami.blogspot.com>

<http://islamic-cs.blogspot.com>

If you like our patterns, you can buy us some tea.  
Send your donation via PayPal by clicking the cup bellow ☺



=====  
*thank you*

**KRISTIK**  
*Islami*

Jl. Belitung No. 33, Hadimulyo Barat  
Metro, Lampung 34113 – Indonesia

✉ [islamicxstitch@yahoo.com](mailto:islamicxstitch@yahoo.com)

☎ (62) 725 41322 - (62) 815 40835 146

# Key and Floss Information

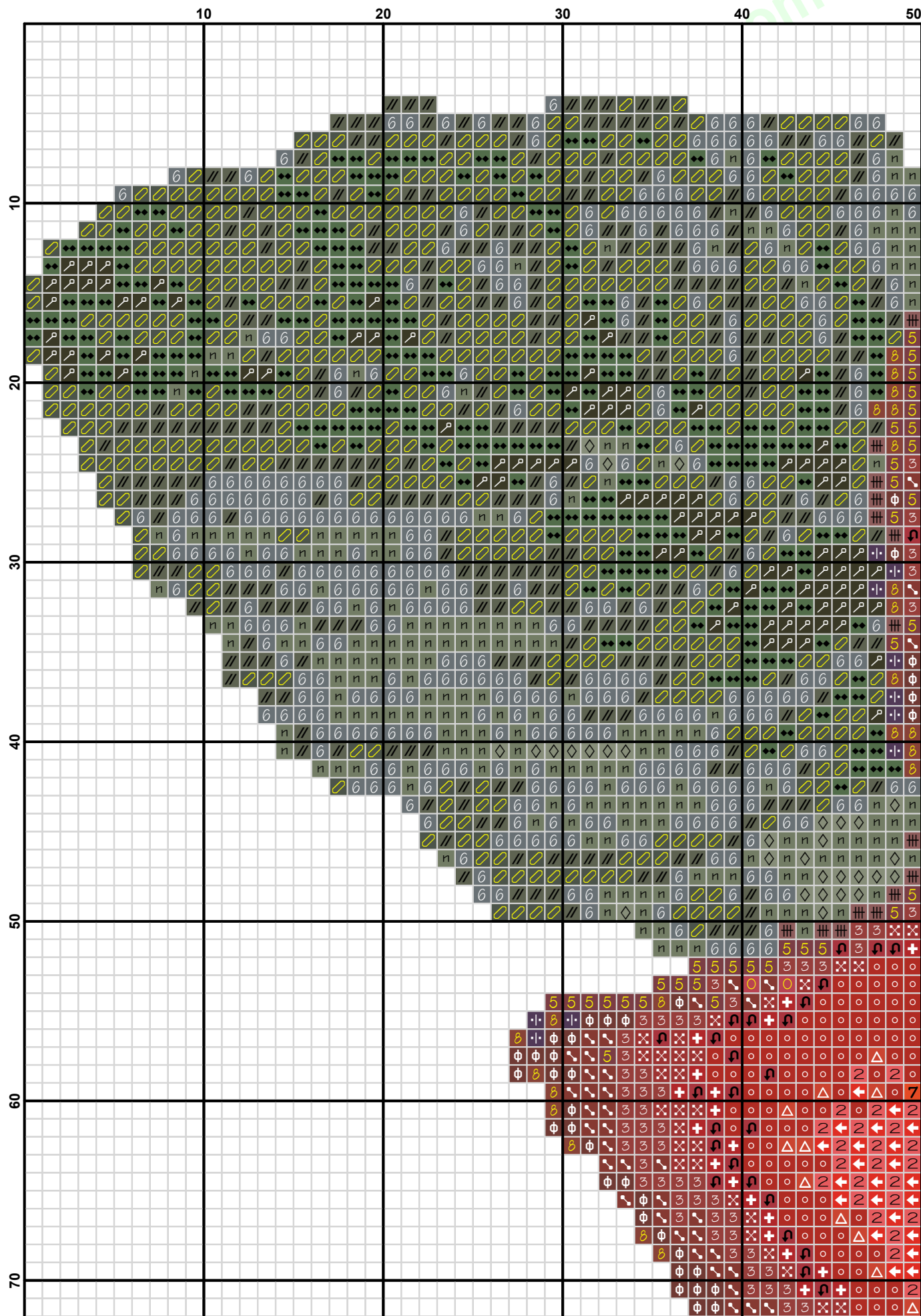
**Notes:** This pattern was designed with usage of DMC cotton threads (Art 117) in mind, using 2 strands on 14ct Aida fabric. We suggest you to use 3 strands for 11ct, or 1 strands for 18ct and above (1 over 1) .. thank you for downloading our pattern, happy stitching! ☺

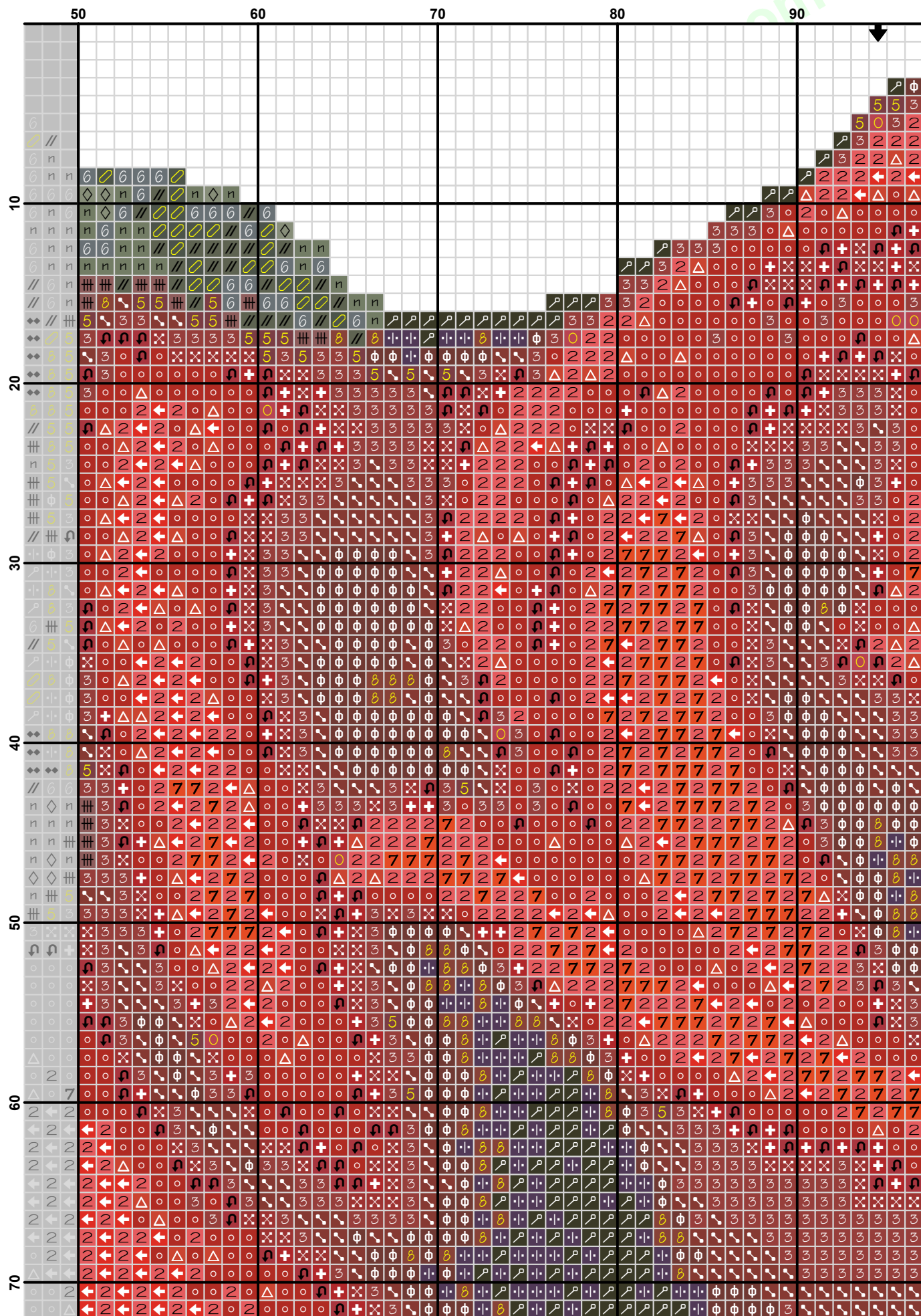
## Floss Used for Full Stitches

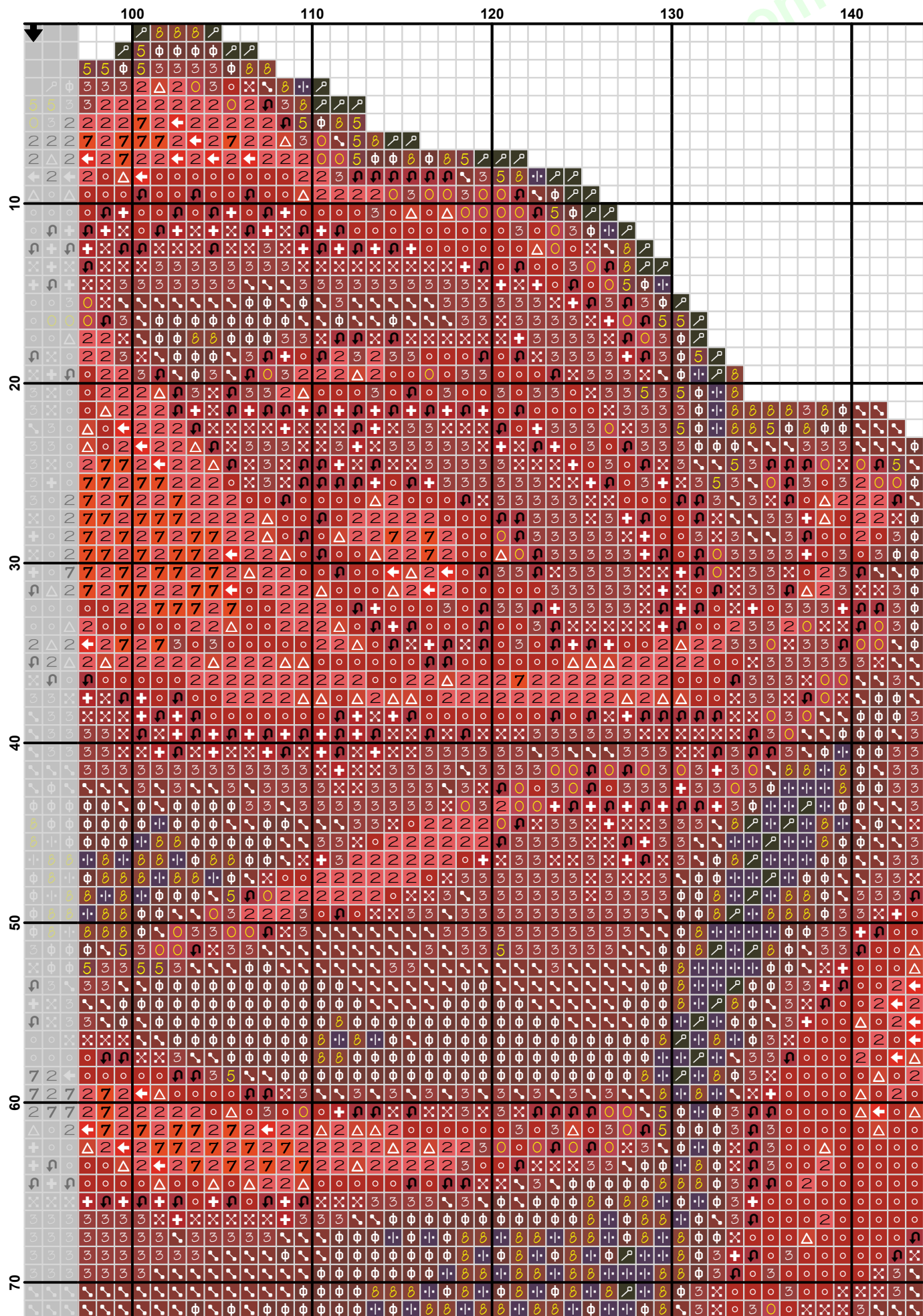
Symbol	Anchor	DMC	Full	Skein Est.
	897 Rose Wine VY DK	221 Shell Pink-VY DK	604	1.000
	1006 Cherry Red	304 Christmas Red-MD	810	1.000
	42 Carmine Rose Med	309 Rose-DK	98	1.000
	1019 Antique Mauve VY DK	315 Antique Mauve-VY DK	42	1.000
	400 Grey Med	317 Pewter Gray	1316	1.000
	9046 Christmas Red	321 Christmas Red	426	1.000
	59 China Rose	326 Rose-VY DK	725	1.000
	862 Laurel Green DK	520 Fern Green-DK	1455	1.000
	102 Violet VY DK	550 Violet-VY DK	711	1.000
	334 Blaze Med	606 Bright Orange-Red	231	1.000
	273 Stone Grey DK	645 Beaver Gray-VY DK	883	1.000
	8581 Stone Grey	646 Beaver Gray-DK	166	1.000
	45 Carmine Rose VY DK	814 Garnet-DK	1402	1.000
	43 Carmine Rose Med DK	815 Garnet-MD	1256	1.000
	1005 Cherry Red Med	816 Garnet	1625	1.000
	13 Salmon DK	817 Coral Red-VY DK	2050	1.000
	1041 Stone Grey VY DK	844 Beaver Brown-UL DK	1130	1.000
	333 Blaze Med LT	900 Burnt Orange-DK	294	1.000
	332 Blaze LT	946 Burnt Orange-MD	211	1.000
	382 Fudge DK	3371 Black Brown	997	1.000
	1028 Raspberry Med DK	3685 Mauve-DK	196	1.000
	35 Blush DK	3705 Melon-DK	808	1.000
	236 Charcoal Grey DK	3799 Pewter Gray-VY DK	2061	1.000

Strands Per Skein: 6

Skein Length: 313.0in. approx. 8,000 mm

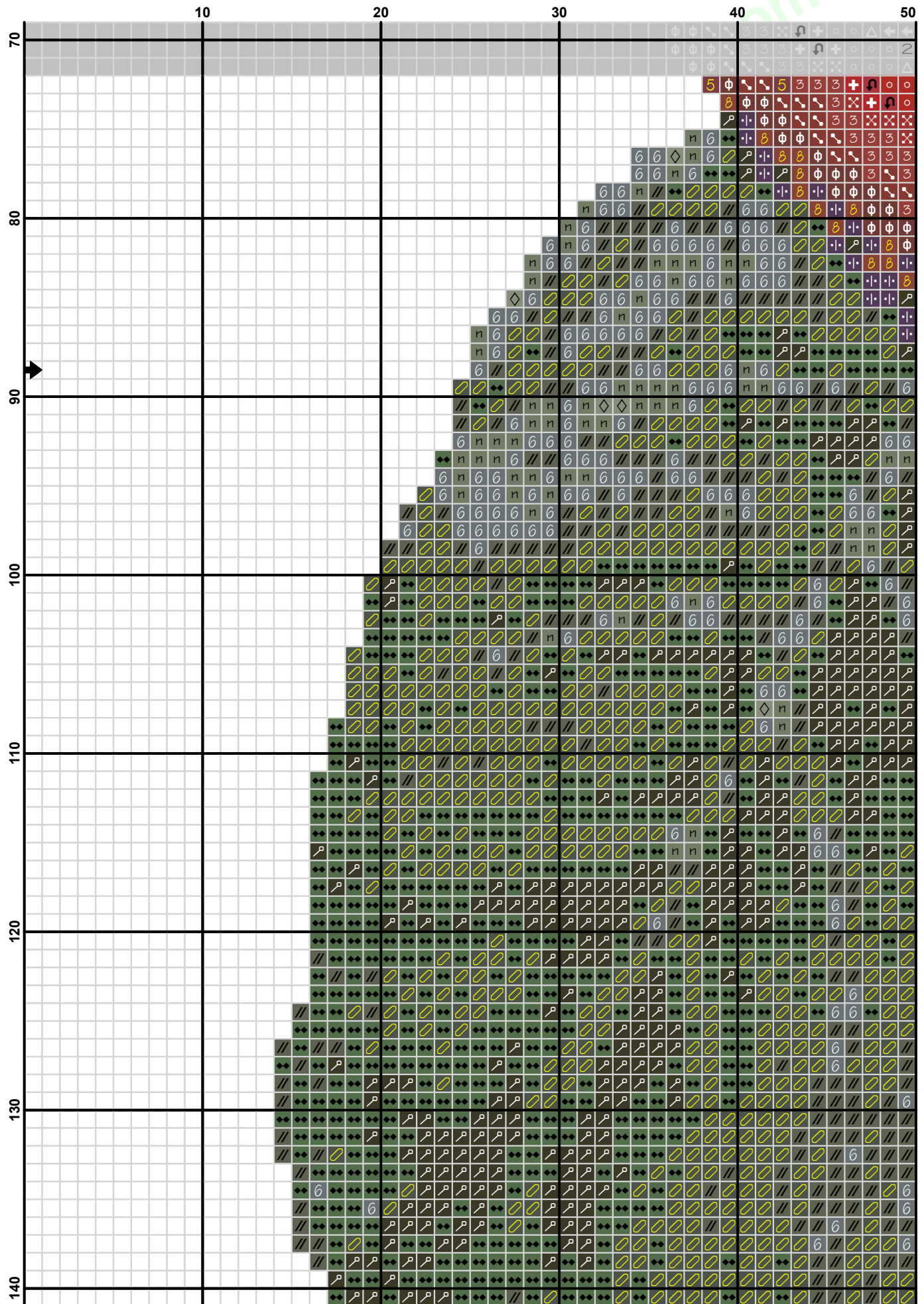




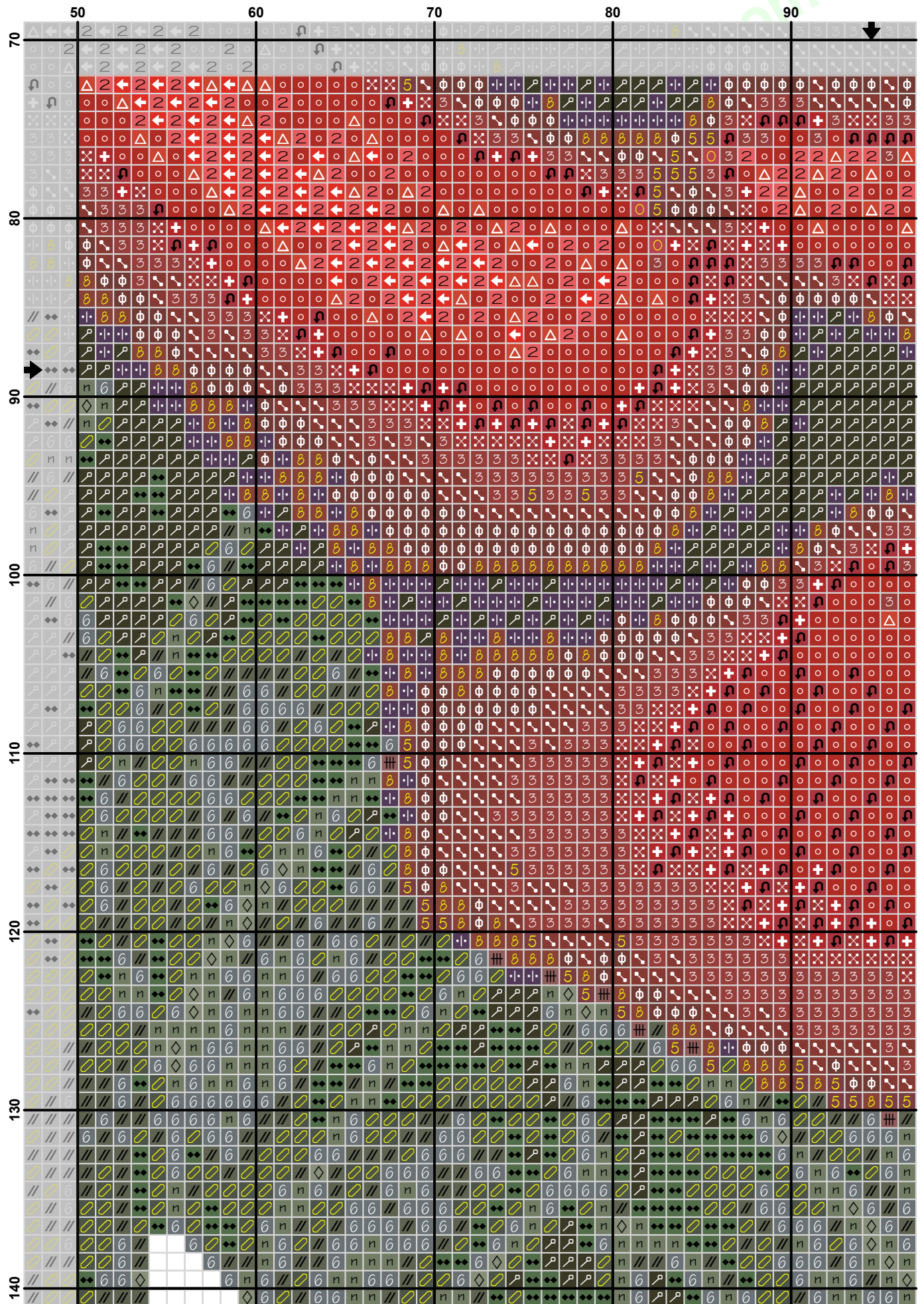


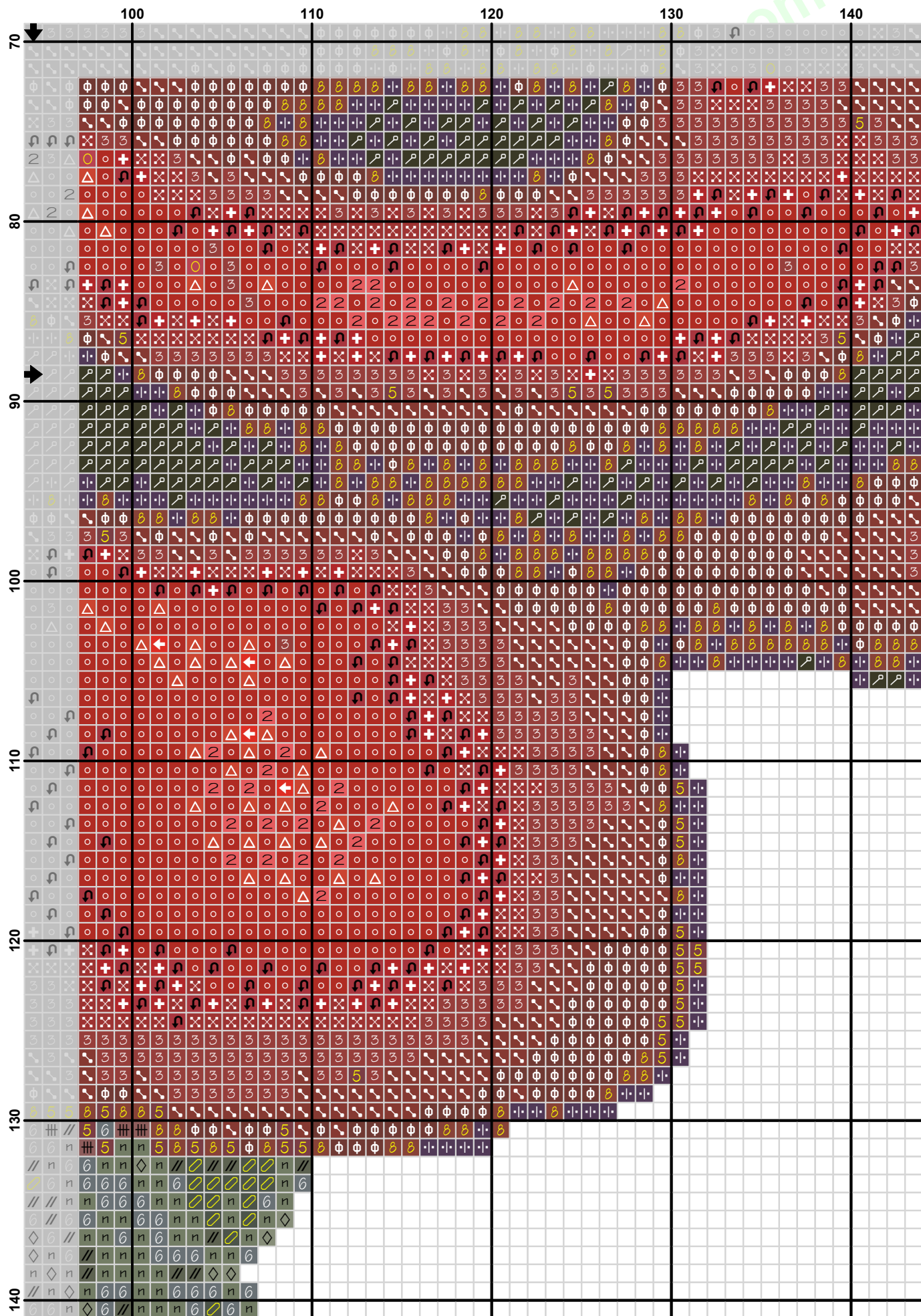


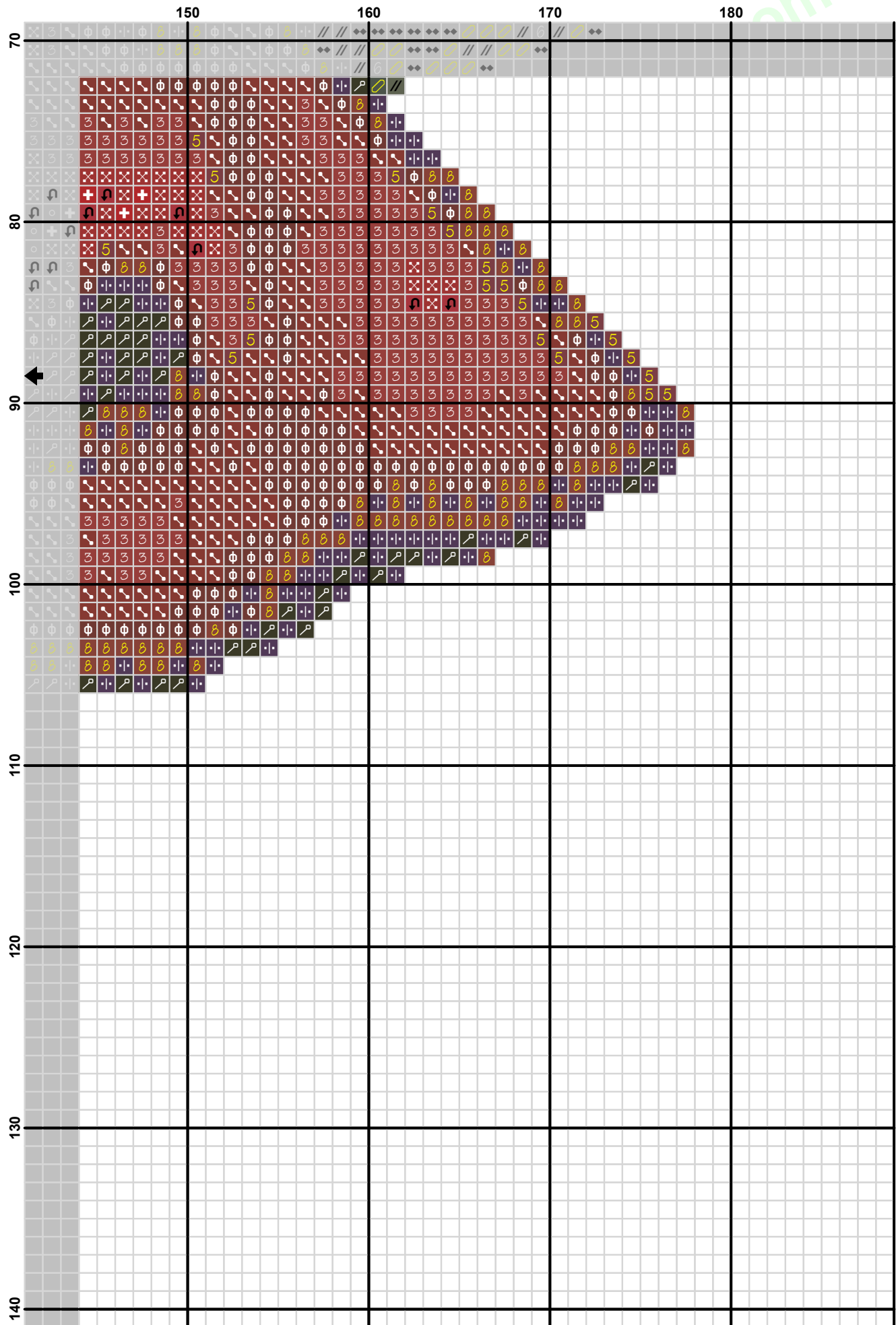


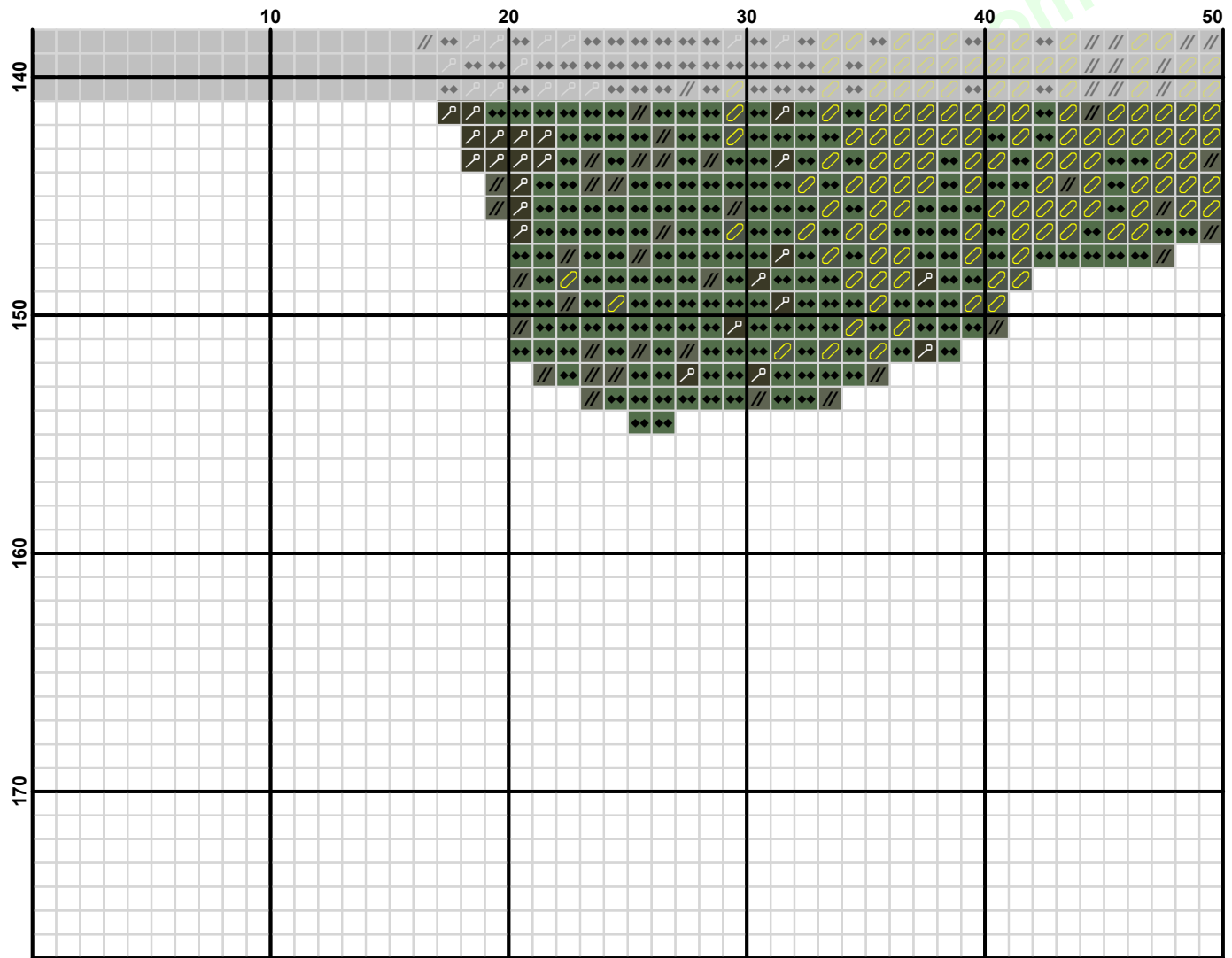


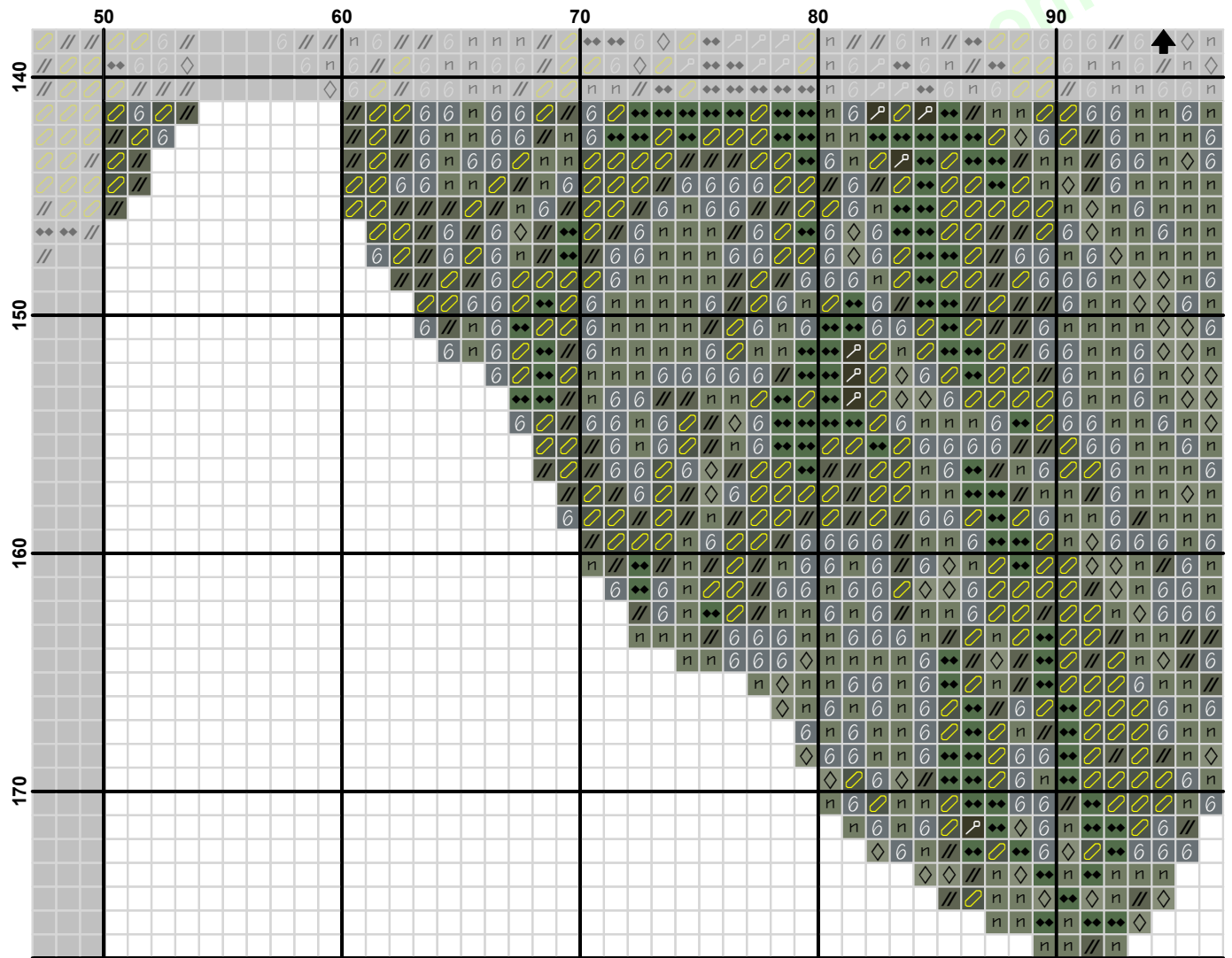












	100	110	120	130	140														
140	↑	◇	n	//	n	n	n	n	n	//	//	◇	◇						
	//	n	◇	n	6	6	n	n	6	6	6	n	6						
	6	6	n	◇	6	//	n	n	n	6	6	6	n						
	n	6	n	◇	◇	//	6	n	n	n	//	6	6						
	n	◇	6	6	◇	◇	6	6	n	n	6	//	//	n					
	n	n	n	6	6	◇	n	6	n	n	n	//	//	◇					
	6	n	n	6	6	◇	n	//	//	6	6	//	6	n					
	n	n	n	6	6	//	◇	◇	//	6	//	6	//	n					
	◇	n	6	n	6	6	n	n	6	//	//	n	n						
150	◇	6	n	n	6	n	6	n	n	//	6	6	◇						
	◇	◇	n	6	n	6	//	6	n	n	6	6	◇						
	n	◇	◇	6	6	n	6	//	6	n	6								
	n	◇	◇	n	6	6	n	//	6	6	//								
	6	n	◇	//	6	n	//	6	//										
	n	6	n	◇	n	//	//	6	n	6									
	n	n	6	◇	◇	//	6	//	n	n	6								
	n	◇	n	n	◇	n	//	//	6	6	//								
	n	n	n	6	n	◇	6	//	6	//									
160	6	n	6	6	◇	6	6	6	◇										
	//	6	n	n	6	n	◇	n	//										
	6	6	n	n	6	6	◇	6	◇										
	6	6	6	n	6	n	//												
	n	//	//	6	6	◇	//												
	◇	//	6	6	n	n													
	n	n	//	6	6	n													
	6	n	6	6	6														
	6	n	n	6	//														
	//	n	◇	6															
170	6	n	6																
	6	//																	
	6	6																	
	n																		
	◇																		

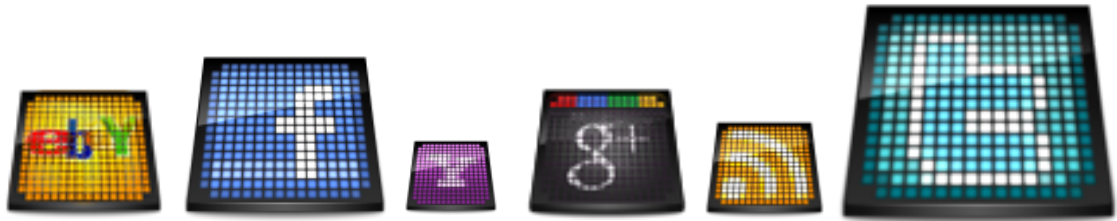
<http://kristikislami.blogspot.com>



	150	160	170	180
140				
150				
160				
170				

<http://kristikislami.blogspot.com>

## *Find Us on the Internet*



**KRISTIK**  
*Islamic*

Jl. Belitung No. 33, Hadimulyo Barat  
Metro, Lampung 34113 – Indonesia

✉ [islamicxstitch@yahoo.com](mailto:islamicxstitch@yahoo.com)

☎ (62) 725 41322 - (62) 815 40835 146