

Islamic Cross Stitch Pattern “Ramadhan Night”



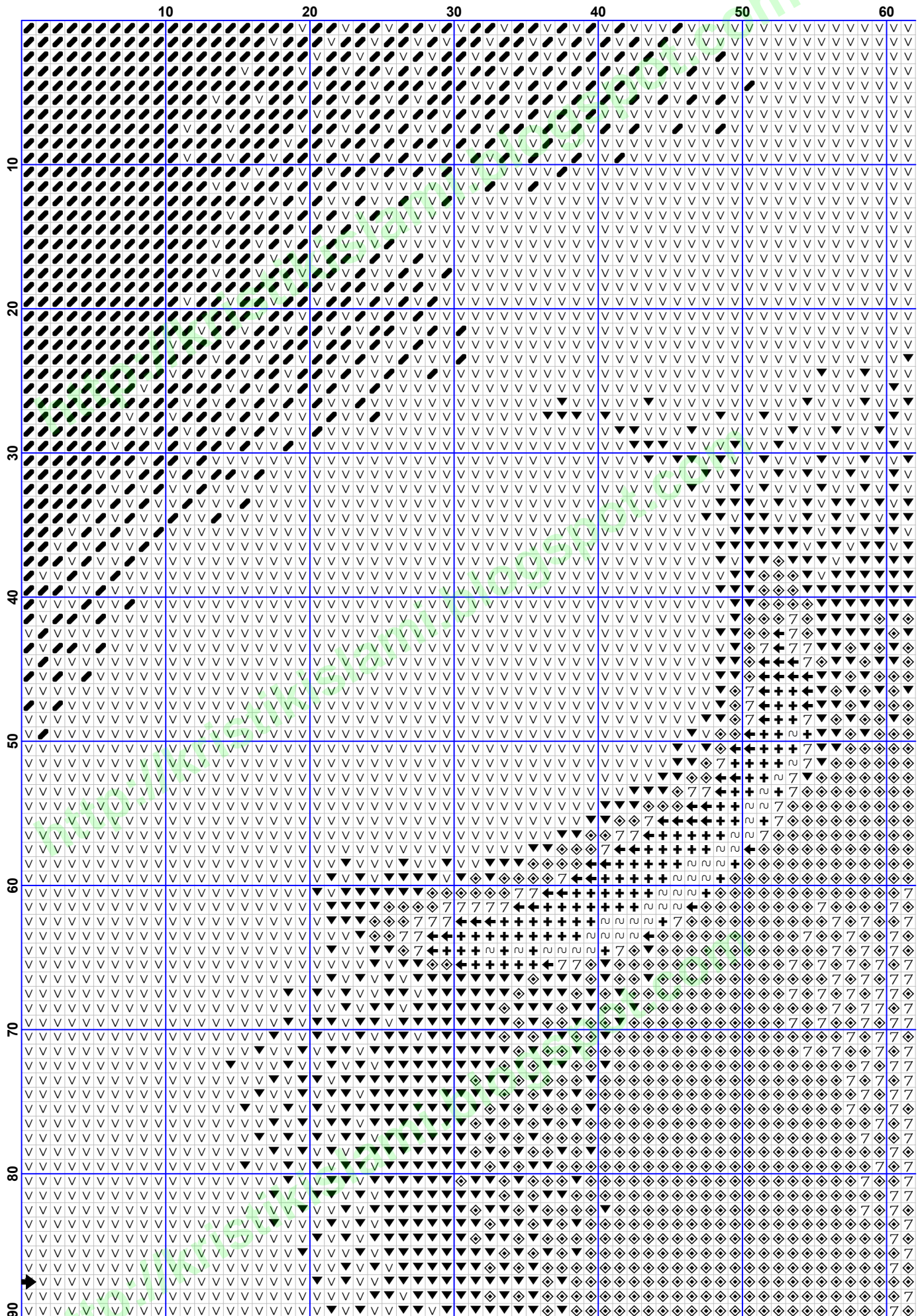
Most of Rights reserved, 2011

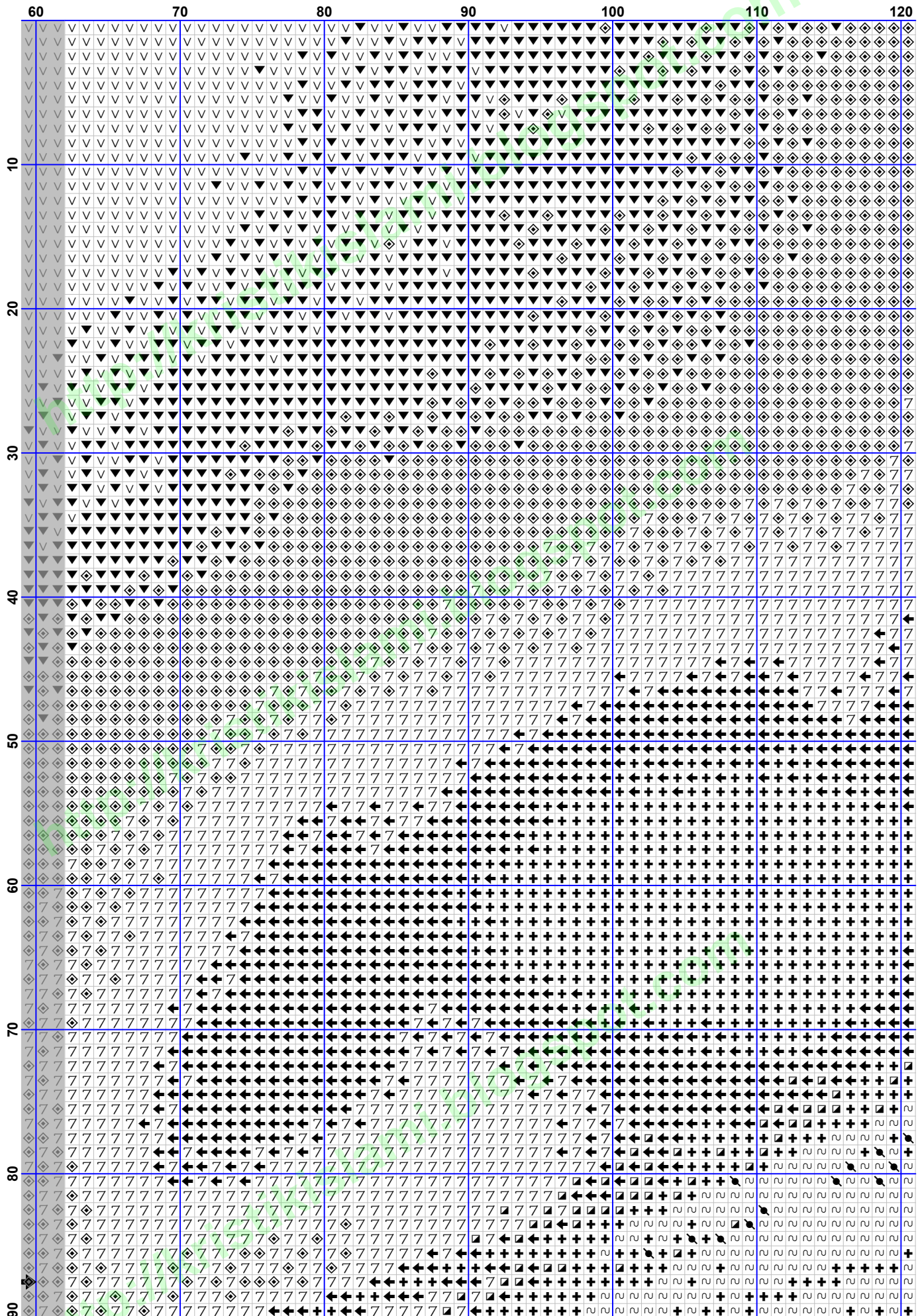
Licensed under a Attribution-Noncommercial-No Derivative Works 3.0 Unported License

You are free to Share — to copy, distribute and transmit the work
UNDER_THE_FOLLOWING_CONDITIONS:

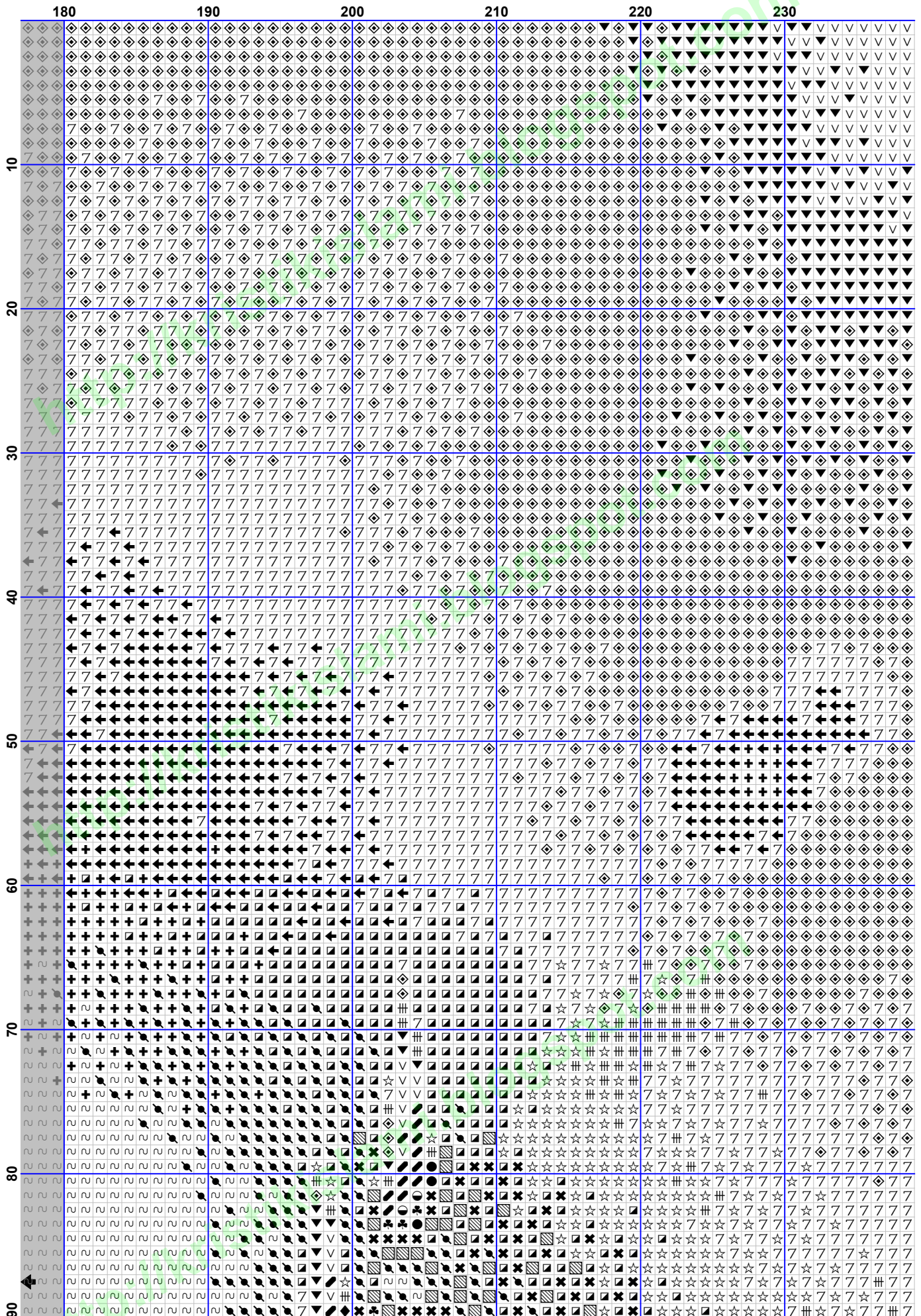
1. **Attribution.** You must attribute the work in the manner specified by the author or licensor (but not in any way that suggests that they endorse you or your use of the work)
 2. **Noncommercial.** You may not use this work for commercial purposes.
 3. **No Derivative Works.** You may not alter, transform, or build upon this work.
- ◆ For any reuse or distribution, you must make clear to others the license terms of this work. The best way to do this is with a link to this web page:
<http://creativecommons.org/licenses/by-nc-nd/3.0/>
 - ◆ Any of the above conditions can be waived if you get permission from the copyright holder.
 - ◆ Nothing in this license impairs or restricts the author's moral rights.

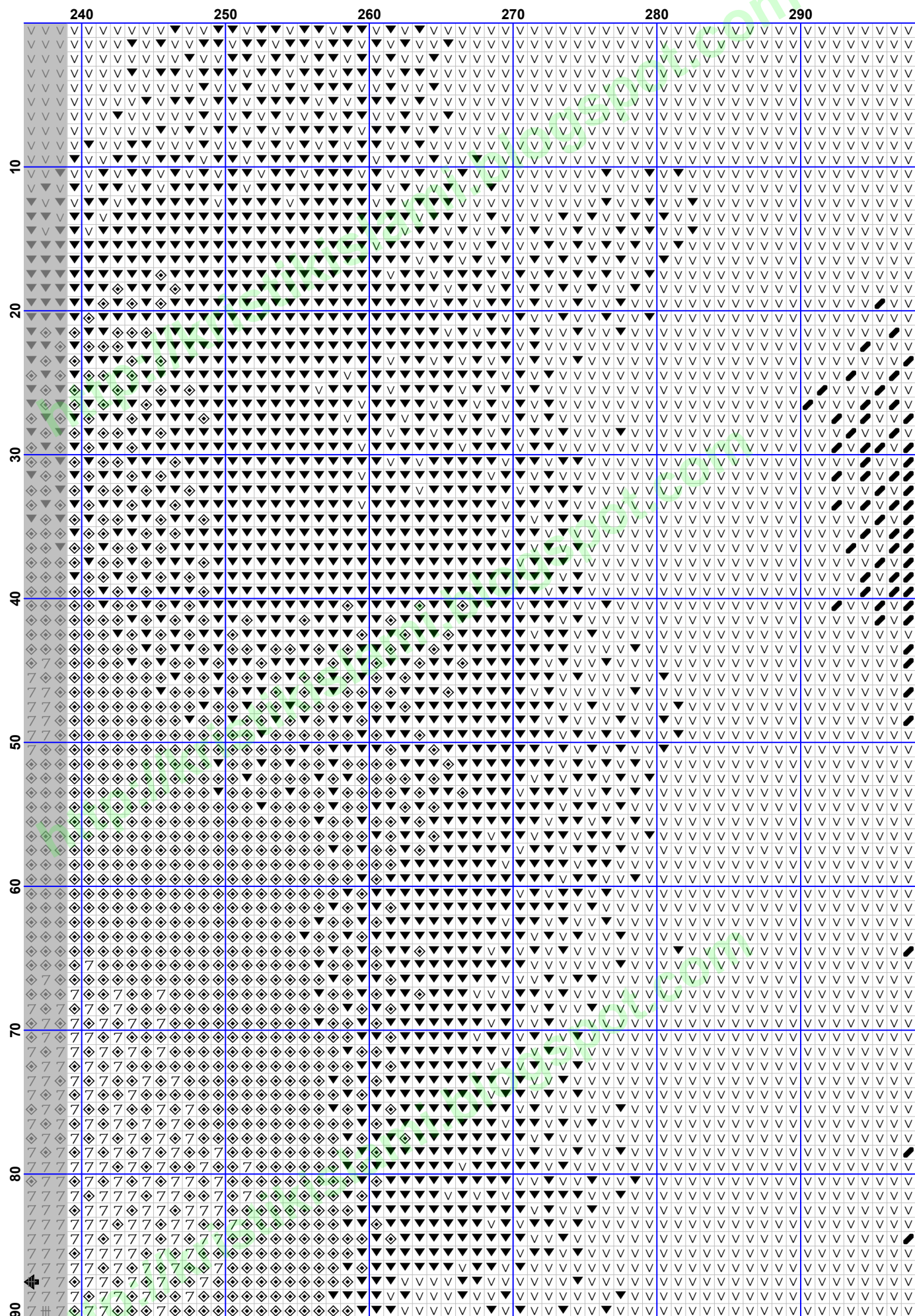
=====
for more free pattern, please visit
<http://kristikislami.blogspot.com>
<http://islamic-cs.blogspot.com>
=====

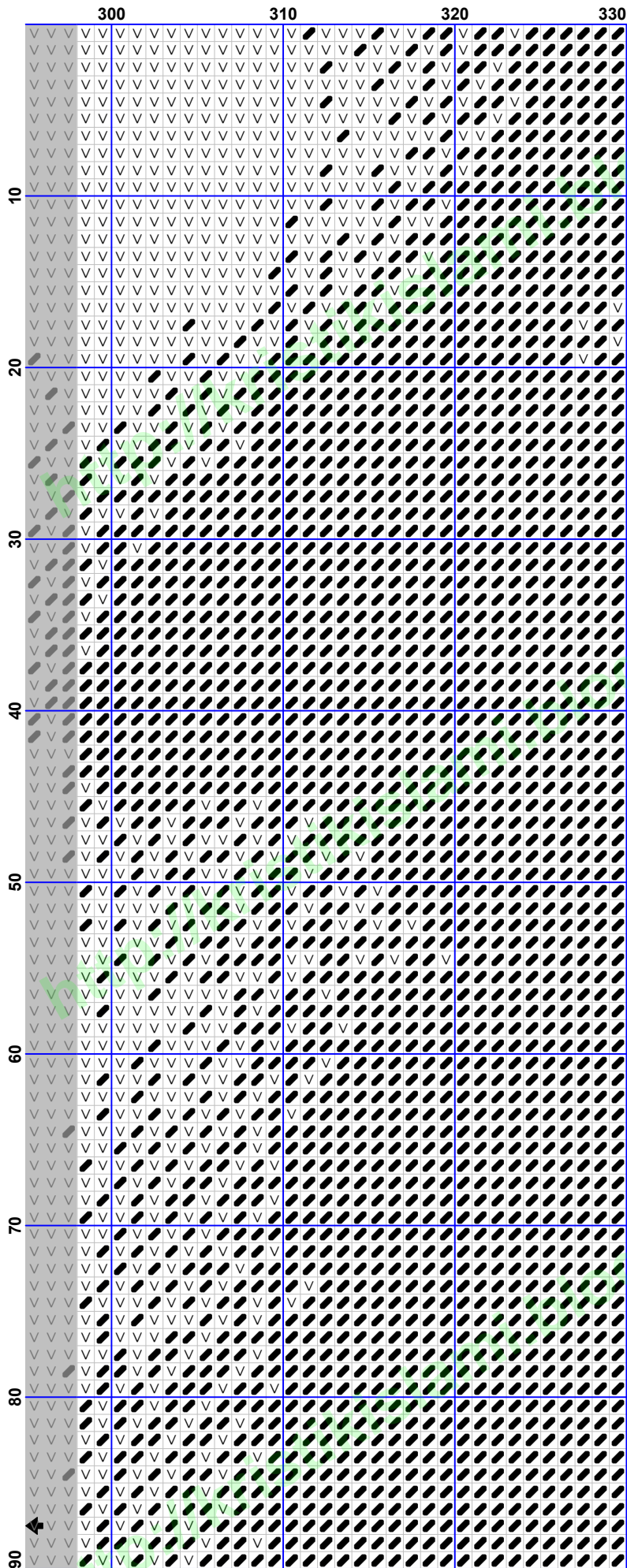


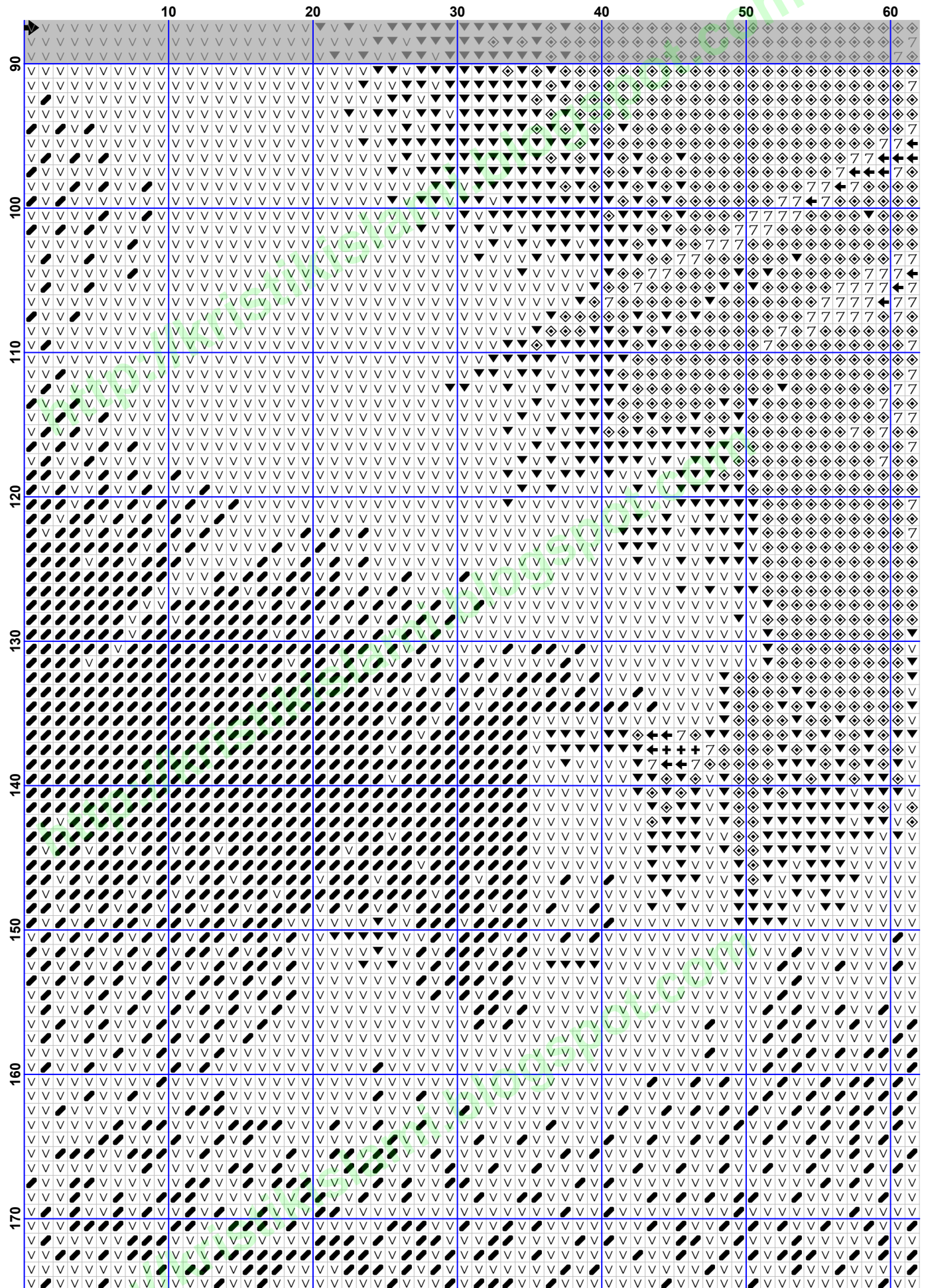


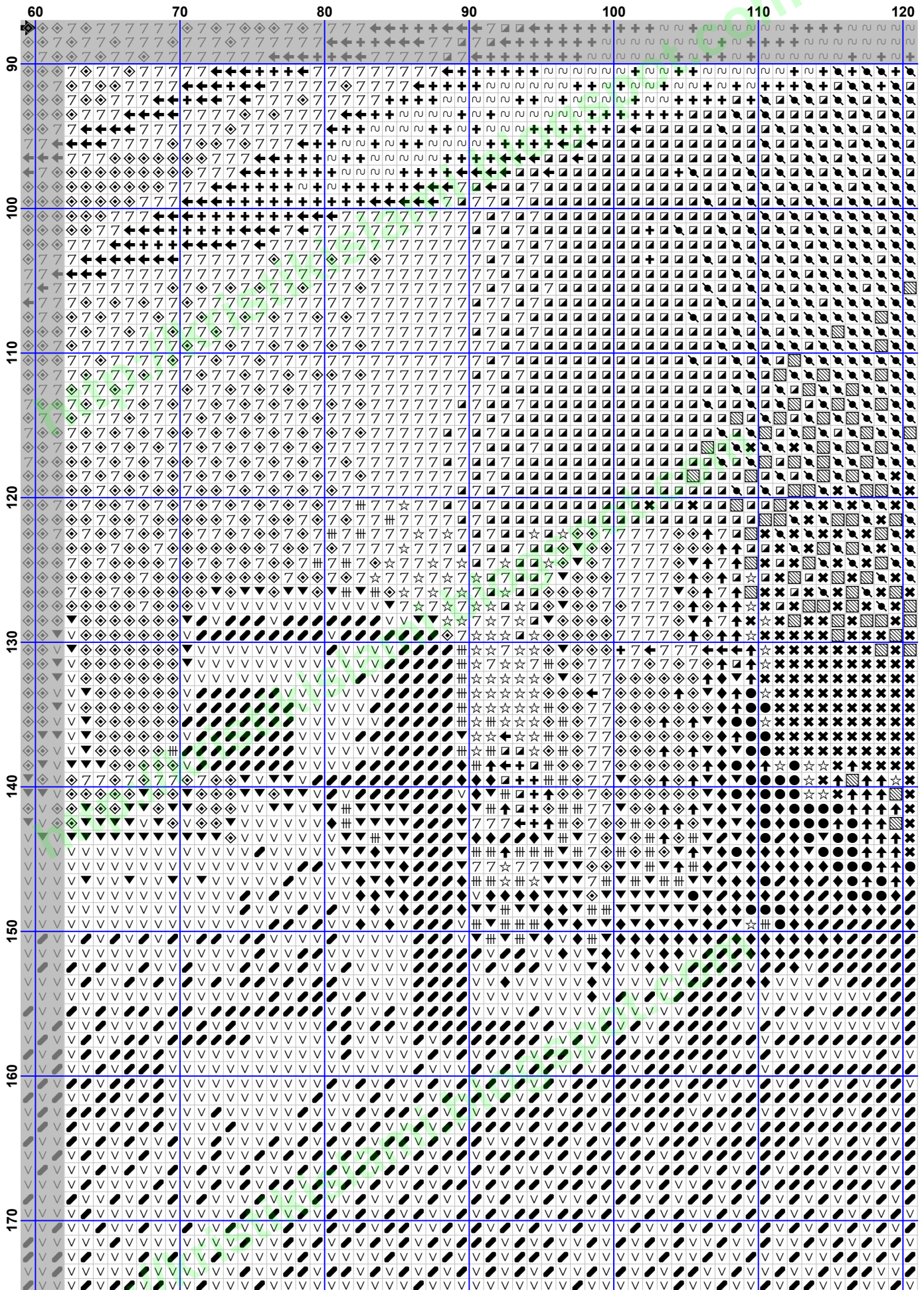
	120	130	140	150	160	170	180
10	7	7	7	7	7	7	7
20	7	7	7	7	7	7	7
30	7	7	7	7	7	7	7
40	7	7	7	7	7	7	7
50	7	7	7	7	7	7	7
60	7	7	7	7	7	7	7
70	7	7	7	7	7	7	7
80	7	7	7	7	7	7	7
90	7	7	7	7	7	7	7

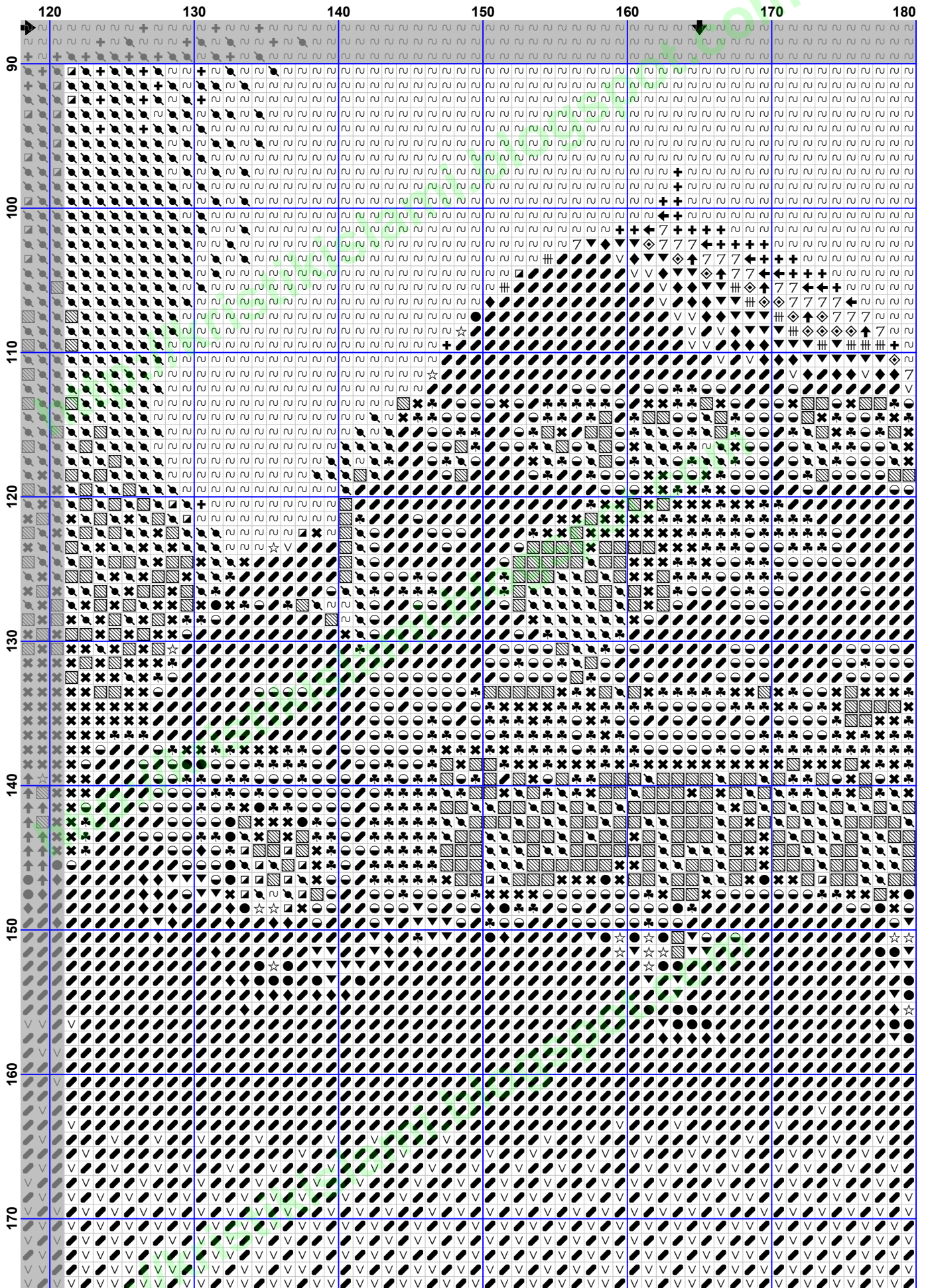


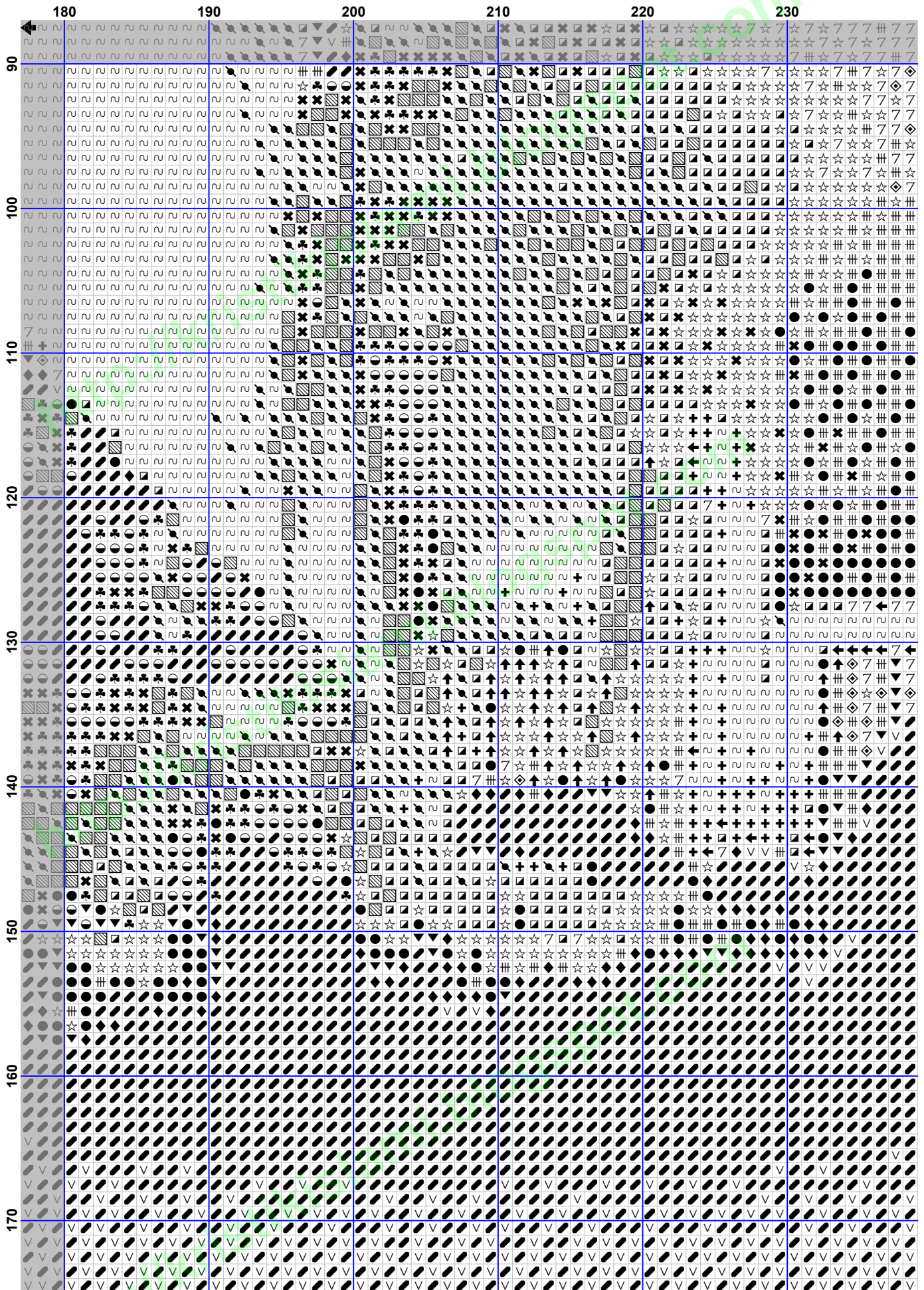


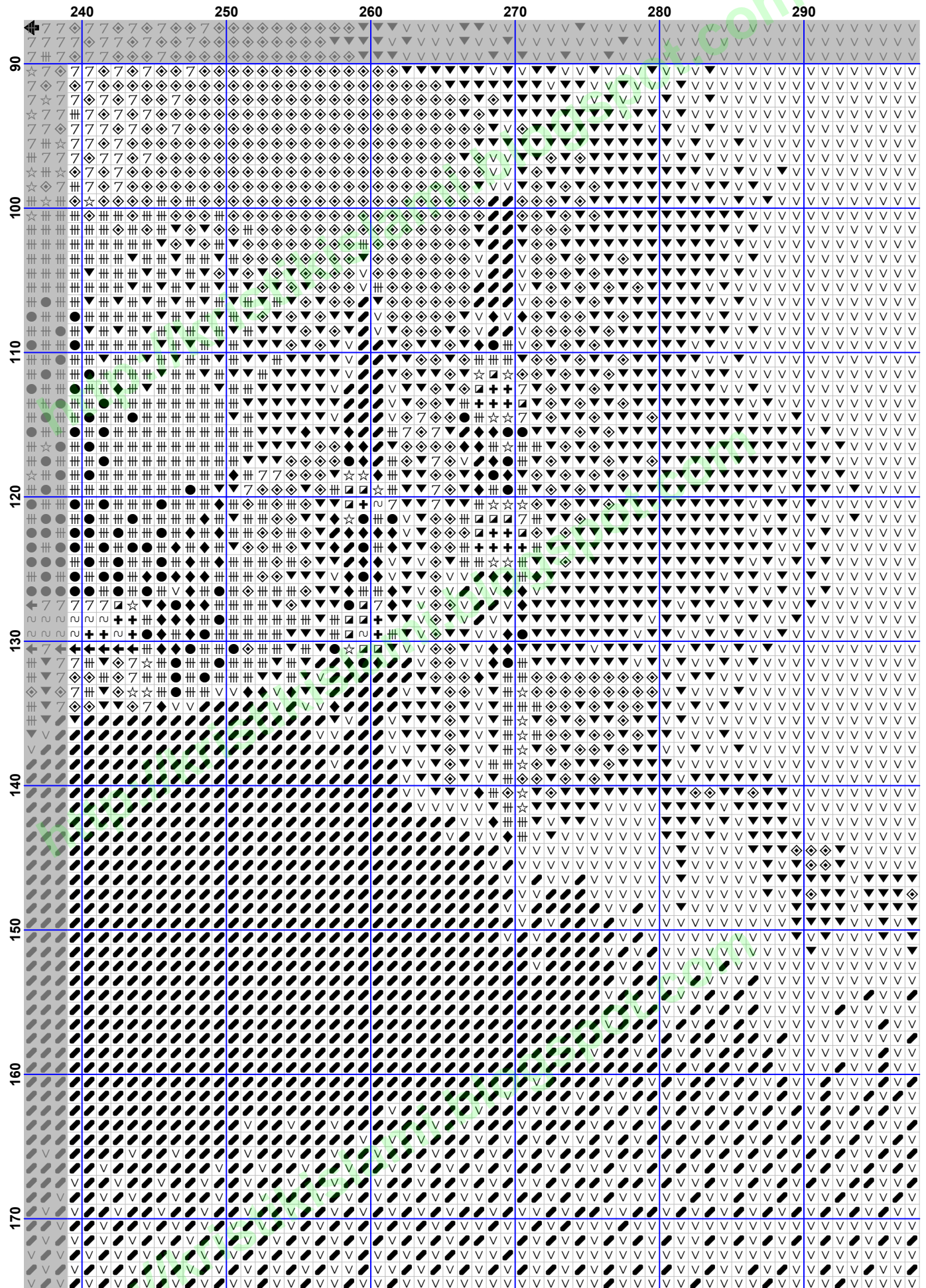


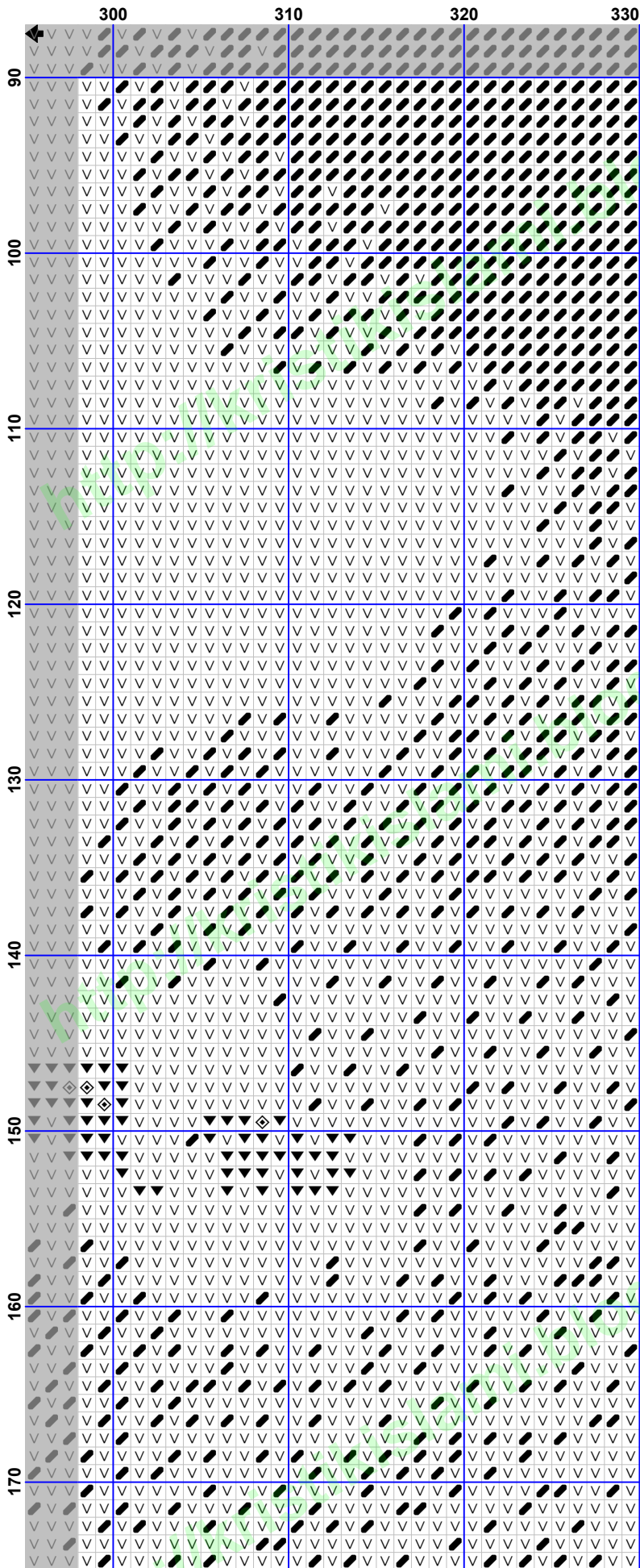













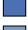








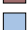








Pattern Name: Ramadhan Night
Designed By: Era Fiyan & Wiwin Armiyani
Company: Kristik Islami
Copyright: Licensed under a Attribution-Noncommercial-No Derivative Works 3.0 Unported License
Fabric: Aida 14, White
 330w X 175h Stitches
Size(s): 14 Count, 23-1/2w X 12-1/2h in
 11 Count, 30w X 15-7/8h in
 18 Count, 18-1/4w X 9-5/8h in

Floss Used for Full Stitches:

Symbol	Strands	Type	Number	Color
	2	DMC	224	Shell Pink-VY LT
	2	DMC	318	Steel Gray-LT
	2	DMC	413	Pewter Gray-DK
	2	DMC	414	Steel Gray-DK
	2	DMC	502	Blue Green
	2	DMC	612	Drab Brown-LT
	2	DMC	792	Cornflower Blue-DK
	2	DMC	798	Delft Blue-DK
	2	DMC	799	Delft Blue-MD
	2	DMC	803	Baby Blue-UL VY DK
	2	DMC	809	Delft Blue
	2	DMC	819	Baby Pink-LT
	2	DMC	820	Royal Blue-VY DK
	2	DMC	898	Coffee Brown-VY DK
	2	DMC	938	Coffee Brown-UL DK
	2	DMC	939	Navy Blue-VY DK
	2	DMC	3726	Antique Mauve-DK
	2	DMC	3840	Lavender Blue-LT
	2	DMC	3842	Wedgewood-DK

Usage Summary**Strands Per Skein:** 6**Skein Length:** 313.0 in

Type	Number	Full	Half	Quarter	Petite	Back(in)	Str(in)	Spec(in)	French	Bead	Skein Est.
DMC 224	1676	0	0	0	0	0.0	0.0	0.0	0	0	1.000
DMC 318	1575	0	0	0	0	0.0	0.0	0.0	0	0	1.000
DMC 413	339	0	0	0	0	0.0	0.0	0.0	0	0	1.000
DMC 414	740	0	0	0	0	0.0	0.0	0.0	0	0	1.000
DMC 502	123	0	0	0	0	0.0	0.0	0.0	0	0	1.000
DMC 612	704	0	0	0	0	0.0	0.0	0.0	0	0	1.000
DMC 792	634	0	0	0	0	0.0	0.0	0.0	0	0	1.000
DMC 798	7592	0	0	0	0	0.0	0.0	0.0	0	0	4.000
DMC 799	5409	0	0	0	0	0.0	0.0	0.0	0	0	3.000
DMC 803	327	0	0	0	0	0.0	0.0	0.0	0	0	1.000
DMC 809	2246	0	0	0	0	0.0	0.0	0.0	0	0	1.000
DMC 819	3116	0	0	0	0	0.0	0.0	0.0	0	0	2.000
DMC 820	14355	0	0	0	0	0.0	0.0	0.0	0	0	7.000
DMC 898	419	0	0	0	0	0.0	0.0	0.0	0	0	1.000
DMC 938	511	0	0	0	0	0.0	0.0	0.0	0	0	1.000
DMC 939	10598	0	0	0	0	0.0	0.0	0.0	0	0	5.000
DMC 3726	590	0	0	0	0	0.0	0.0	0.0	0	0	1.000
DMC 3840	1541	0	0	0	0	0.0	0.0	0.0	0	0	1.000
DMC 3842	5255	0	0	0	0	0.0	0.0	0.0	0	0	3.000